



By Appointment to  
His Majesty King Charles III  
Suppliers of Mats and Matting Services  
phs Group, Caerphilly



phs Group, Block B, Western Industrial Estate  
Caerphilly CF83 1XH

029 2080 9090 | [productinfo@phs.co.uk](mailto:productinfo@phs.co.uk) | [phsgroup.co.uk](http://phsgroup.co.uk)

phs Group a company registered in England & Wales. Company Registration No. 05384799



## > Floorcare Product Guide





# Contents

|  |    |                                    |       |
|--|----|------------------------------------|-------|
| What is ECONYL®?                       | 05 | Slip Safety Service                | 29    |
| About ECONYL®                          | 06 | Contamination mats                 | 30    |
| Why mats?                              | 07 | Wet area matting                   | 32    |
| Benefits of serviced matting Floorcare | 08 | Fitted mats – introduction         | 33    |
| Map of Mats                            | 09 | Lift car mats – logo / image       | 34    |
| Lead Times                             | 11 | Ultra Plus fitted mats             | 35    |
| Loose Lay Mats                         | 12 | Planet Range fitted mats           | 36    |
| Eco Standard Mats                      | 13 | Logo / image fitted mats           | 37    |
| Ultra Plus Mats                        | 14 | Printed plain colour fitted mats   | 38    |
| Planet Range                           | 15 | Permanent fitted matting solutions | 39    |
| Printed Plain Mats                     | 16 | Forma HD – plain & logo            | 40    |
| Logo / Image Mats                      | 17 | Quadra HD – plain & logo           | 41    |
| Rubber Logo Mats                       | 18 | Tergo HD                           | 42    |
| Outdoor Premium Logo Mats              | 19 | Foris – fitted                     | 44    |
| Tuff Canopy Mats                       | 20 | Smart Step                         | 44    |
| Washroom mats                          | 22 | Megahold                           | 45    |
| Workplace office mats                  | 23 | Entrance Matting Cleaning          | 46    |
| Shaped mats                            | 24 | Work Matta Range                   | 47-48 |
| PPE message mats                       | 25 |                                    |       |
| Comfort anti-fatigue mats              | 26 |                                    |       |
| Ultraflow anti-fatigue mats            | 27 |                                    |       |
| Premium anti-fatigue indoor mats       | 28 |                                    |       |



By Appointment to  
His Majesty King Charles III  
Suppliers of Mats and Matting Services  
phs Group, Caerphilly

# What is ECONYL®?



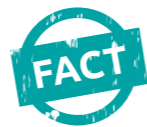
Ghost nets are abandoned fishing nets which drift to the bottom of oceans tangling over reefs and ensnaring marine life such as whales, dolphins turtles and seals every year, leading to their eventual deaths.

Each year it is estimated that over 640,000 tonnes of nets are abandoned in the oceans of the world. A nylon fishing net will take approx. 600 years to decompose, and during that time will break down into micro-fibres, entering the food chain, causing us unknown future health consequences.

**phs** source mats from a sustainable partner called M&A, who work with other environmental companies, such as Aquafil, to remove this netting from our oceans.

All plain mats are now made from 100% ECONYL® regenerated nylon reclaimed from our oceans, not only saving our marine life but protecting our planet for future generations.

All our Logo & Image Mats are made from rPET which is produced from recycle plastic bottles.



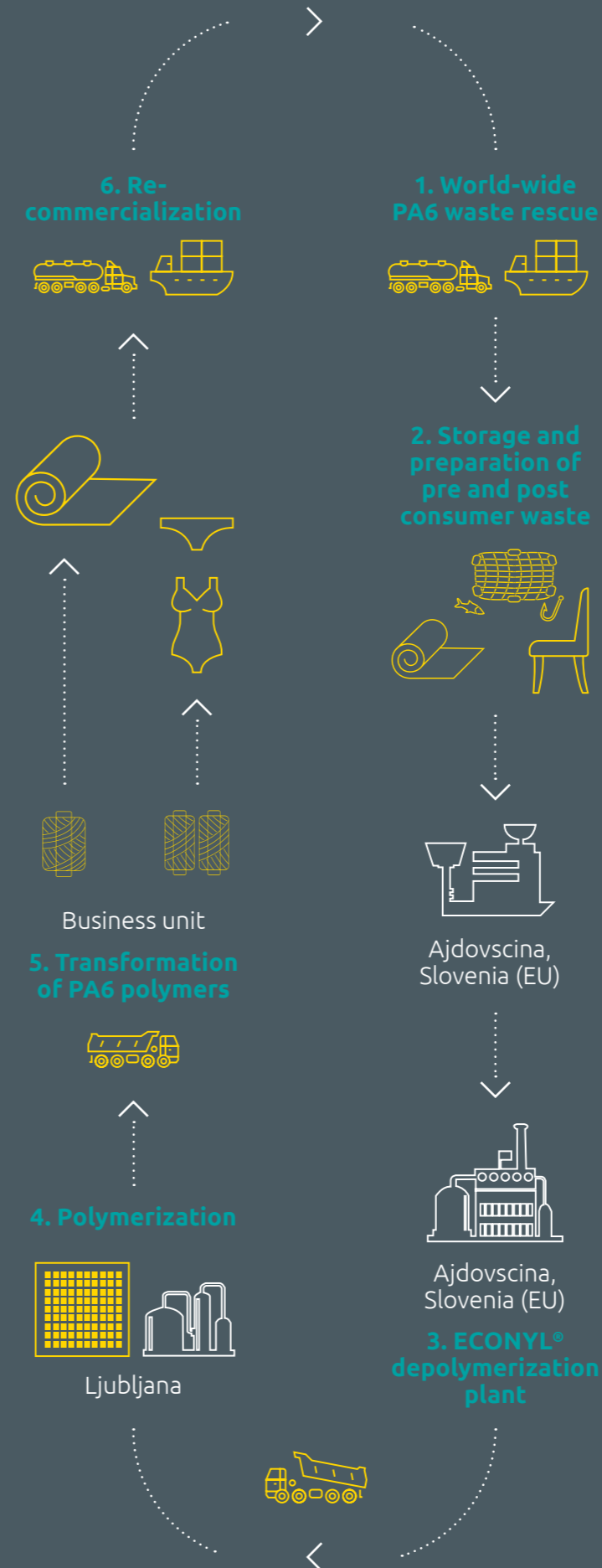
➤ Check out our ECONYL® video on YouTube: [https://youtube/xzpyt2nSF\\_c](https://youtube/xzpyt2nSF_c)



### DID YOU KNOW?

640,000 tonnes of fishing nets are abandoned in our oceans each year, trapping and killing wildlife and damaging reefs

## ECONYL® The 6 steps



# About ECONYL®

Some see trash. Others see treasure.

Nylon waste, otherwise polluting the Earth, is transformed into ECONYL® regenerated nylon. It's exactly the same as brand new nylon and can be recycled, recreated and remoulded again and again.

That means you can create new products and buy new products without having to use new resources.

ECONYL® regenerated nylon is a product that can help you close the loop. Made from waste, it's infinitely recyclable and can unleash infinite possibilities for makers, creators and consumers. It's all part of the ECONYL® brand vision to make the world a better place by pioneering closed loop regeneration processes and delivering sustainable products.

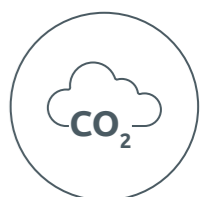
As well as being a solution on waste, ECONYL® regenerated nylon is also better when it comes to climate change.

It reduces the global warming impact of nylon by up to 90% compared with the material from oil.

**For every 10,000 tons of ECONYL® raw material, we are able to:**



Save **70,000** barrels of crude oil



Avoid **65,100** tonnes of CO2 eq. emissions

## Why mats?

**51%** of plaintiffs win liability claims for slips and falls

Source: Jury Verdict Research



Source: International Workplace

**90%** of slips occur when the floor is wet

Source: HSE



Source: Dept. of Environment

**Slips**, trips and falls are the most common injury to employees

Source: HSE

**40%** of any cleaning budget is used to clean the floors

Source: Carpet and Floor Covering Review

## Benefits of serviced matting

- > **Image** and brand awareness.
- **Reducing** cleaning time and cost on site.
- **Protecting** floors from premature damage.
- **Preventing** slips and trips – legal requirement.
- **Being** better than your rival across the street!
- **Cleaner** floors – improves image.
- **Drier** floors – prevent slips.
- **Health** and safety compliant.
- **Storing** foot-borne dirt and removing from premises.

# The most common environments that **phs** can help solve problems on your floors



● Corridors, lifts and vending

● Washroom

● Manufacturing area

● Commercial kitchen

● Slip testing service

● Changing room

● Entrance and reception

● Sanitiser dispensers

● Wet matting area

# Floorcare availability and lead times

## Eco standard mats

120x85, 150x85, 180x115, 350x115



Up to 10 days | Qty Over 25 | 5 weeks mobilisation call

## Tuff. Ultra Plus, Comfort. Ultraflow



Up to 10 days | Qty Over 25 | 5 weeks mobilisation call

## Hand dryer mats



Up to 10 days | Qty Over 25 | 5 weeks mobilisation call

## Logo, Image & Plain Coloured Mats



Lead time: 4 weeks

## Wet area matting



Lead time: 3-4 weeks

## Bespoke Mats - Planet etc



Lead time: 5-6 weeks

## Outdoor mats



Lead time: 6 weeks

## Permanent Fitted Mats

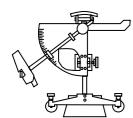


Lead time: 5-6 weeks

## Fitted logo, Plain, Ultra Plus

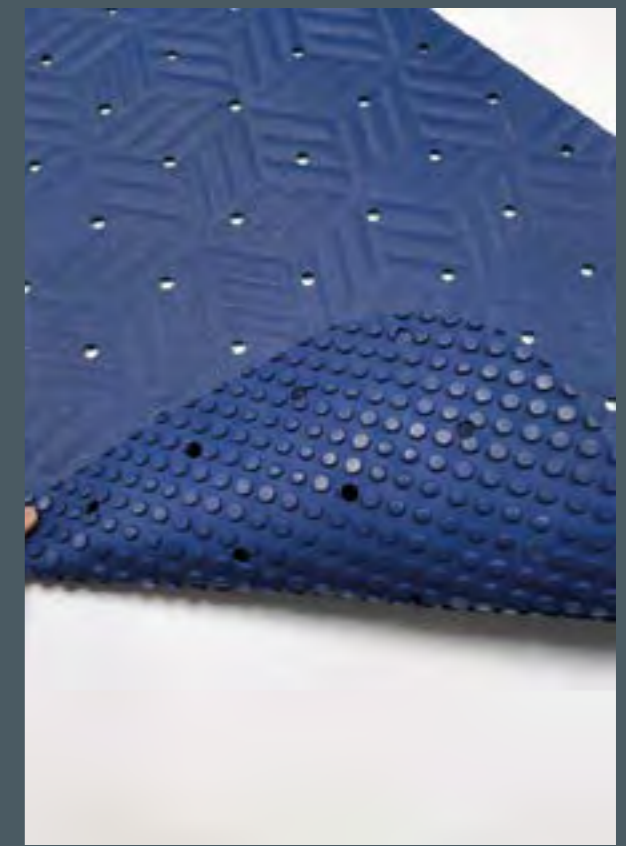


Lead time: 5-6 weeks

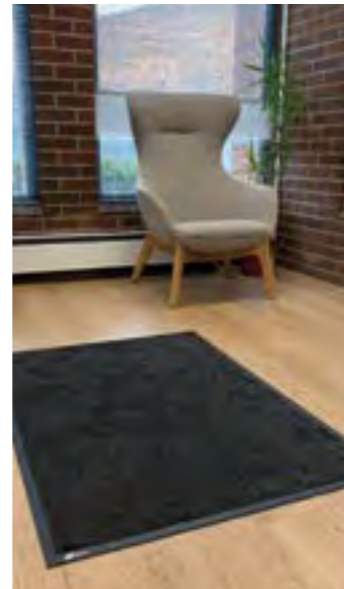


Slip test Pendulum  
Lead time: 3-4 weeks

# Loose-lay Lift and Lay matting solutions



# Eco standard mats



## Key features

- Standard service is 26 p.a. (fortnightly)
- Monthly (13p.a.) & weekly (52p.a.) available
- Backing = 100% nitrile rubber
- Total thickness = 9mm
- Fire resistance = Cfl s1
- 18mm anti trip rubber border all around
- Antistatic = <2kV
- Yarn = 100% ECONYL®
- BS8300 / DDA / ADA compliant
- Indoor use only



## Available options

| Colour options: | Mink               | Brazil  | Sapphire | Rainforest | Sapphire | Rainforest |        |        |
|-----------------|--------------------|---------|----------|------------|----------|------------|--------|--------|
|                 | Gripper            | Gripper | Gripper  | Gripper    | Smooth   | Smooth     |        |        |
| 120cm x 85cm    | 1.02m <sup>2</sup> | 4 x 3   | 003026   | 003025     | 002794   | 003480     | 007321 | 003485 |
| 150cm x 85cm    | 1.27m <sup>2</sup> | 5 x 3   | 001638   | 002278     | 002273   | 003481     | 007322 | 003486 |
| 180cm x 115cm   | 2.07m <sup>2</sup> | 6 x 4   | 001641   | 002279     | 002274   | 003482     | 007323 | 003487 |
| 240cm x 85cm*   | 2.04m <sup>2</sup> | 8 x 3   | 002064   | 002280     | 002275   | 003483     | 008501 | 003488 |
| 240cm x 115cm*  | 2.76m <sup>2</sup> | 8 x 4   | 003046   | 003072     | 002803   | 17022800   | N/A    | N/A    |
| 350cm x 115cm   | 4.02m <sup>2</sup> | 12 x 4  | 002277   | 002281     | 002276   | 003484     | 07324  | 003489 |



# Ultra plus mats



## Key features

- Standard service is 26 p.a. (fortnightly)
- Monthly (13p.a.) & weekly (52p.a.) available
- Backing = 100% nitrile rubber
- Total thickness = 10-11mm
- Fire resistance = Dfl-s1
- 20mm anti-trip rubber border all around
- Antistatic = <2kV
- Yarn = 100% ECONYL®
- BS8300 / DDA / ADA compliant
- Colours: graphite only
- Gripper or smooth backed choice
- 32% more soil/moisture capture than standards
- Ideal sink mat for use in washrooms
- Heavy duty micromix pile 66%/33%
- Indoor use only

## Product Specification

|           |  |
|-----------|--|
| Sizes     | 120x85cm, 150x85cm, 180x115cm, 240x85cm, 350x115cm |
| Thickness | 10mm   |
| Colour    | Graphite Grey                                      |



Also available in a fitted lift and lay mat option.

## Available options

| Backing options:                              |                    |       |  | Gripper or smooth |
|---|--------------------|-------|--|-------------------|
| Bespoke Ultra Plus Loose-Lay – 120cm x 85cm   | 1.02m <sup>2</sup> | 4 x 3 |  | 17036148          |
| Bespoke Ultra Plus Loose-Lay – 150cm x 85cm   | 1.27m <sup>2</sup> | 5 x 3 |  | 17036150          |
| Bespoke Ultra Plus Loose-Lay – 180cm x 115cm  | 2.07m <sup>2</sup> | 6 x 4 |  | 17036161          |
| Bespoke Ultra Plus Loose-Lay – 240cm x 115cm  | 2.76m <sup>2</sup> | 8 x 4 |  | 17036173          |
| Bespoke Ultra Plus Loose-Lay – 240cm x 150cm  | 3.60m <sup>2</sup> | 8 x 5 |  | 17036185          |
| Bespoke Ultra Plus Loose-Lay – 350cm x 115cm  | 4.02m <sup>2</sup> | 12 x  |  | 17036197          |
| Standard Ultra Plus Loose-Lay – 85cm x 60cm   | 0.51m <sup>2</sup> | 4 x 2 |  | 17023397          |
| Standard Ultra Plus Loose-Lay – 120cm x 85cm  | 1.02m <sup>2</sup> | 4 x 3 |  | 17022848          |
| Standard Ultra Plus Loose-Lay – 150cm x 85cm  | 1.27m <sup>2</sup> | 5 x 3 |  | 17022850          |
| Standard Ultra Plus Loose-Lay – 180cm x 115cm | 2.07m <sup>2</sup> | 6 x 4 |  | 17022861          |
| Standard Ultra Plus Loose-Lay – 240cm x 85cm  | 2.04m <sup>2</sup> | 8 x 3 |  | 17022873          |
| Standard Ultra Plus Loose-Lay – 350cm x 115cm | 4.02m <sup>2</sup> | 12 x  |  | 17022885          |

## NEW

200 x 200cm Ultra Plus 4 sqm 17039307

Maximum width is 150cm you can go any size in the opposite direction as long as you are within 3.9sqm. Also available fitted in any matwell upto 3.9sqm

**32% more absorbent than a standard mat**

# Planet Range

Mottled / Flecked Mats for extra durability



Our planet range of mats offer limitless design opportunities. From creating a complete brand experience, to providing additional health and safety signage.

### Key Features:

- New pattern developed to compliment dark grey, blue, brown and red in our forma and foris colour range
- Can be used as a patterned mat or logo mat
- Please note that the planet range of fleck patterned colours are not an exact match to our Forma and Foris range of colours due to the different textile used in the product
- Available in any bespoke size up to 4.2sqm (loose-lay) and up to 3.9sqm (fitted)

| Options:                                  |  |          |
|---|--|----------|
| Planet Range – Loose Lay – 120 x 85       |  | 17035168 |
| Planet Range – Loose Lay – 150 x 85       |  | 17035170 |
| Planet Range – Loose Lay – 180 x 115      |  | 17035181 |
| Planet Range – Loose Lay – 240 x 115      |  | 17035193 |
| Planet Range – Loose Lay – 240 x 150      |  | 17035200 |
| Planet Range – Loose Lay – 350 x 115      |  | 17035211 |
| Planet Range Logo – Loose Lay – 120 x 85  |  | 17035223 |
| Planet Range Logo – Loose Lay – 150 x 85  |  | 17035235 |
| Planet Range Logo – Loose Lay – 180 x 115 |  | 17035247 |
| Planet Range Logo – Loose Lay – 240 x 115 |  | 17035259 |
| Planet Range Logo – Loose Lay – 240 x 150 |  | 17035260 |
| Planet Range Logo – Loose Lay – 350 x 115 |  | 17035272 |

Also available fitted in any matwell upto 3.9sqm



**Please Note:** 10cm is added to the size of each mat in both directions as standard procedure by the logo's team to give the fitter the material required to cut.

Maximum width or length is 185cm you can go any size in the opposite direction as long as you are within 3.9sqm.

Also available in a fitted lift and lay mat option.



# Printed plain colour mats

Same price as logo mats



### Key features

- Standard service is 26 p.a. (fortnightly)
- Monthly (13p.a) & weekly (52p.a.) available
- Backing = 100% nitrile rubber
- Total thickness = 9mm
- Fire resistance = Cfl s1
- 18mm anti trip rubber border all around
- Bespoke mats i.e. dedicated stock
- Antistatic = <2kV
- BS8300 / DDA / ADA compliant
- Gripper or smooth backed
- DMS backing for heavy weight smooth backing
- 100 colour choices
- Bespoke sizes are available up to mac. 4.02sqm
- HD344 can not be used
- Indoor use only
- **Light colour backgrounds should not be used!**



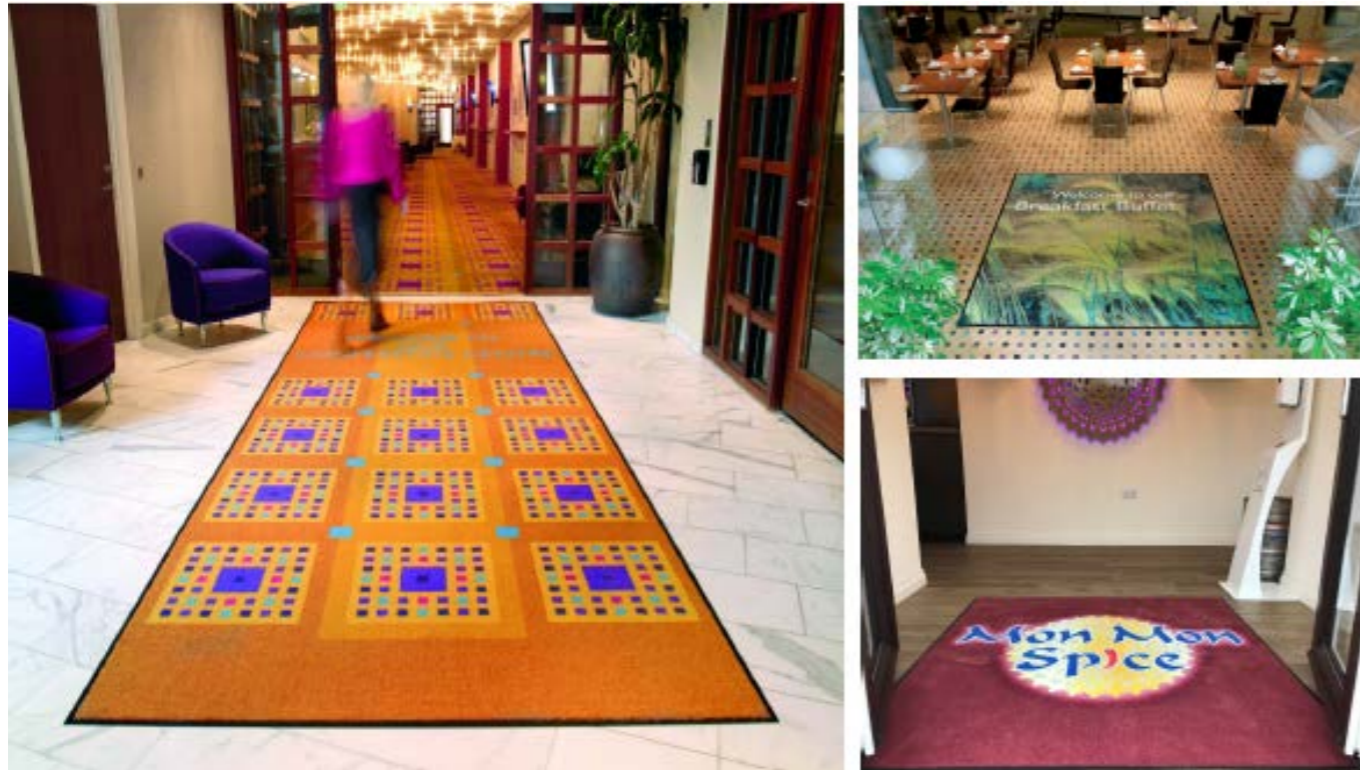
### Available options

| Backing options: | Gripper or smooth         | DMS backed smooth only |
|------------------|---------------------------|------------------------|
| 120cm x 85cm     | 1.02m <sup>2</sup> 4 x 3  | 107950 17020177        |
| 150cm x 85cm     | 1.27m <sup>2</sup> 5 x 3  | 107951 17020189        |
| 180cm x 115cm    | 2.07m <sup>2</sup> 6 x 4  | 107952 17020190        |
| 240cm x 115cm    | 2.76m <sup>2</sup> 8 x 4  | 107953 17020707        |
| 240cm x 150cm    | 3.60m <sup>2</sup> 8 x 5  | 107954 17020219        |
| 350cm x 115cm    | 4.02m <sup>2</sup> 12 x 4 | 107955 N/A             |





# Logo / Image mats



## Key features

- Standard service is 26 p.a. (fortnightly)
- Monthly (13p.a.) & weekly (52p.a.) available
- Backing = 100% nitrile rubber
- Total thickness = 9mm
- Fire resistance = Cfl-s1
- 18mm anti-trip rubber border all around
- Bespoke mats i.e. dedicated stock
- Antistatic = <2kV
- BS8300 / DDA / ADA compliant
- Gripper or smooth backed
- DMS backing for heavy weight smooth backing
- 100 colour choices
- Bespoke sizes are available up to max. 4.02sqm
- Use dark practical background colours
- Indoor use only



## Available options

| Backing options: |                    | Gripper or smooth |        | DMS      |
|------------------|--------------------|-------------------|--------|----------|
| 120cm x 85cm     | 1.02m <sup>2</sup> | 4 x 3             | 006807 | 17020116 |
| 150cm x 85cm     | 1.27m <sup>2</sup> | 5 x 3             | 006808 | 17020128 |
| 180cm x 115cm    | 2.07m <sup>2</sup> | 6 x 4             | 006809 | 17020130 |
| 240cm x 115cm    | 2.76m <sup>2</sup> | 8 x 4             | 006810 | 17020141 |
| 240cm x 150cm    | 3.60m <sup>2</sup> | 8 x 5             | 007473 | 17020153 |
| 350cm x 115cm    | 4.02m <sup>2</sup> | 12 x 4            | 006811 | N/A      |



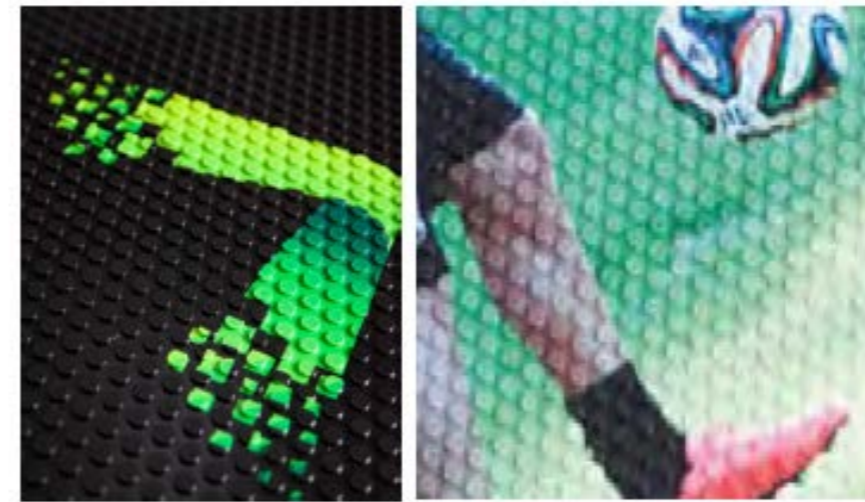
- Avoid using light colours for backgrounds as mats are placed on the floor and therefore need to be practical

# Indoor rubber logo mat

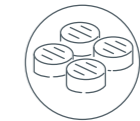


Rubber Logo Mats feature your custom logo or artwork overlaid onto a comfort mat.

Multicolor images are created by molding a digitally printed polymeric material into the durable nitrile rubber surface of the mat.



**High Definition**  
Photographic quality images are printed on thermoplastic material and molded into rubber



**Textured slip resistant surface**  
effectively removes dirt and soil.



**100 % Nitrile EXSTM Rubber**  
resistant to chemicals, greases and oil.



**80 standard colour options**

## RUBBER

100% Nitrile EXSTM™  
thickness 2,9mm

## TOTAL WEIGHT

5,20 kg/m<sup>2</sup>

## THICKNESS

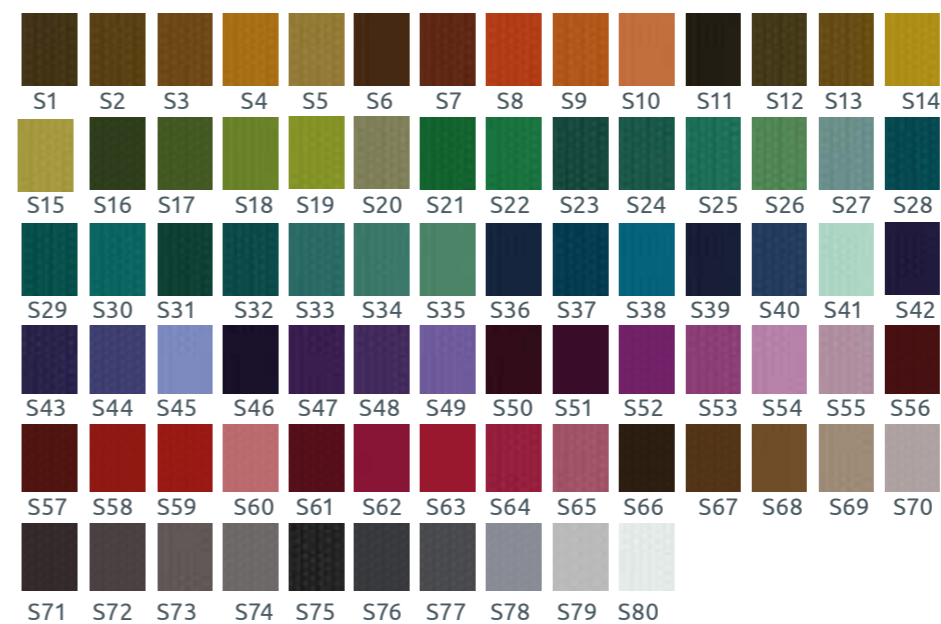
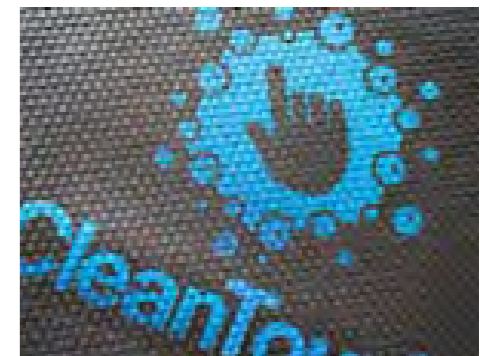
3mm

13pa or 26pa

## Available options

| Mat size   | Max logo size | Code     |
|------------|---------------|----------|
| 75x85cms   | 55x65         | 17034851 |
| 85x150cms  | 65x130        | 17034863 |
| 115x180cms | 95x160        | 17034875 |

Size Tolerance: +/- 5%



**Excellent Indoor PPE Mats**

# Outdoor premium logo mat



Outdoor premium logo mats feature your custom logo or artwork on durable nylon monofibers.



**Durable Nylon Brush monofibers** make for excellent scraping action.



**Drainage holes** allow for excellent drainage.



**50 Colours** to chose from. Plain mats also available.

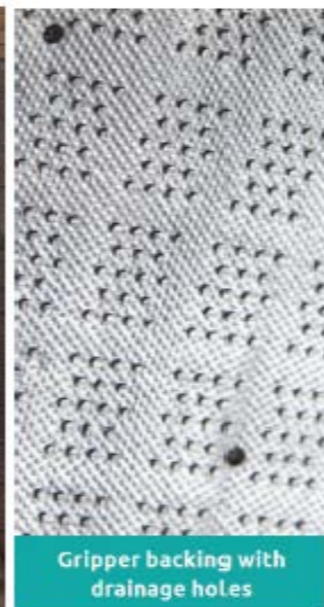


**True outdoor mat** no shelter required.



| Premium Plain Mat |          | Premium Logo Mat |          |
|-------------------|----------|------------------|----------|
| Mat size          | Code     | Mat size         | Code     |
| 75x85cms          | 17034899 | 75x85cms         | 17034760 |
| 85x115cms         | 17034905 | 85x115cms        | 17034772 |
| 85x150cms         | 17034693 | 85x150cms        | 17034784 |
| 115x180cms        | 17034711 | 115x180cms       | 17034802 |
| 115x200cms        | 17034723 | 115x200cms       | 17034814 |

Size Tolerance: +/- 2%  
Frequency 26pa & 13pa



# Outdoor - Tuff mats – canopy

Must be under a canopy



TUFF MAT in situ, must be used under a canopy if being used externally

## Key features

- Standard service is 26 p.a. (fortnightly)
- Monthly (13p.a) & weekly (52p.a.) available
- Backing = 100% nitrile rubber
- Total thickness = 10mm
- Fire resistance = Dfl-s1
- 21mm anti-trip rubber border all around
- Yarn = 100% ECONYL®
- BS8300 / DDA / ADA compliant
- Bespoke mats i.e. dedicated stock
- External use under a canopy only
- Do not place in direct rainfall



Tuff Mat texture sample – grey only

## Available options

| Colour options: |                    | Grey   |        |
|-----------------|--------------------|--------|--------|
| 150cm x 85cm    | 1.27m <sup>2</sup> | 5 x 3  | 003963 |
| 200cm x 115cm   | 2.3m <sup>2</sup>  | 7 x 4  | 003964 |
| 300cm x 85cm    | 2.55m <sup>2</sup> | 10 x 3 | 006925 |



90%



90% of all slips occur when the floor is wet

# Washroom mats

**ECONYL®**  
Made with 100% Regenerated Nylon



## Hand Dryer Mats



## Sink Mats



### Key features

- Standard service is 13 p.a. (Monthly)
- Fortnightly (26p.a.) available
- Backing = 100% nitrile rubber
- Total thickness = 10-11mm
- Fire resistance = Dfl-s1
- 18mm anti-trip rubber border all around
- Antistatic = <2kV
- Yarn = 100% ECONYL®
- BS8300 / DDA / ADA compliant
- Bespoke mats i.e. dedicated stock
- Colours: graphite only
- Smooth backed only for hard floor only
- 32% more soil/moisture capture than standards
- Ideal hand dryer mat for use in washrooms
- Also ideal roller towel cabinet mat
- Heavy duty micromix pile 66%/33%
- Internal use only

### Key features

- Standard service is 13 p.a. (Monthly)
- Fortnightly (26p.a.) available
- Backing = 100% nitrile rubber
- Total thickness = 10-11mm
- Fire resistance = Dfl-s1
- 18mm anti-trip rubber border all around
- Antistatic = <2kV
- Yarn = 100% ECONYL®
- BS8300 / DDA / ADA compliant
- Bespoke mats i.e. dedicated stock
- Colours: graphite only
- Smooth backed only for hard floor only
- 32% more soil/moisture capture than standards
- Ideal hand dryer mat for use in washrooms
- Also ideal roller towel cabinet mat
- Heavy duty micromix pile 66%/33%
- Internal use only

### Available options

| Size options: |             | Graphite colour only |          |
|---------------|-------------|----------------------|----------|
| Small         | 60cm x 30cm | Semi-circular        | 17026763 |
| Large         | 85cm x 42cm | Semi-circular        | 17022812 |

### Available options

| Size options:          |  | Graphite colour only |
|------------------------|--|----------------------|
| Sink Mat - 120 x 85cm  |  | 17037311             |
| Sink Mat - 150 x 85cm  |  | 17037323             |
| Sink Mat - 180 x 115cm |  | 17037335             |
| Sink Mat - 240 x 85cm  |  | 17037347             |

# Workplace office mats



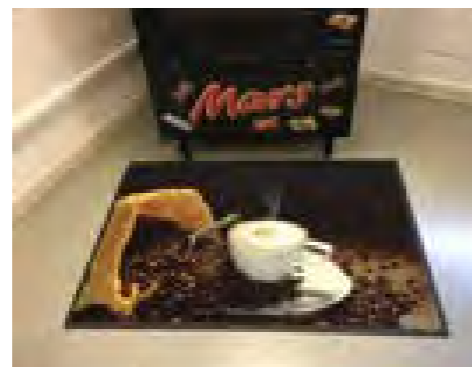
Rectangular mats available in smooth or gripper back.  
Semi-circular mats available in smooth back only for hard surface only.

## Key features

- Standard service is 26 p.a. (fortnightly)
- Monthly (13p.a.) & weekly (52p.a.) available
- Backing = 100% nitrile rubber
- Total thickness = 9mm
- Fire resistance = Cfl s1
- 18mm anti trip rubber border all around
- Bespoke mats i.e. dedicated stock
- Antistatic = <2kV
- BS8300 / DDA / ADA compliant
- Rectangles = gripper or smooth backed
- Semi circular = smooth backed only
- Indoor use only

LIFT & LAY SERVICE

BS8300 COMPLIANT



## Available options

| Backing options: | Shape        | Smooth or gripper | Smooth backed only |
|------------------|--------------|-------------------|--------------------|
| Water cooler mat | 120cm x 85cm | Square            | 17022824           |
| Coffee Vend mat  | 120cm x 85cm | Square            | 17022836           |
| Water cooler mat | 42cm x 85cm  | Semi              | 17023440           |
| Coffee Vend mat  | 42cm x 85cm  | Semi              | 17023452           |

# Shaped mats



Help to remind people to follow instructions in your facility as well as protect floors from premature damage and slips with our new circular message mats.

## Key features:

- Eye catching suits circular logo designs
- Semi Oval / Oval / Circular & Semi-Circular
- Bespoke messaging available
- Beneficial to your facility for highlighting necessary measures in place
- Easy to move to different locations around your facility
- Caution Wet Floor Design - better than cones

## Available options

### Backing options:

|   |          |
|---|----------|
| Semi Oval – Loose Lay – 85cm x 150cm      | 17036290 |
| Semi Oval – Loose Lay – 115cm x 200cm     | 17036306 |
| Semi Oval – Loose Lay – 150cm x 250cm     | 17036318 |
| Oval – Loose Lay – 85cm x 150cm           | 17036320 |
| Oval – Loose Lay – 115cm x 200cm          | 17036331 |
| Oval – Loose Lay – 150cm x 250cm          | 17036343 |
| Circular – Loose Lay – 85cm x 85cm        | 17036355 |
| Circular – Loose Lay – 115cm x 115cm      | 17036367 |
| Semi-Circular – Loose Lay – 115cm x 57cm  | 17036379 |
| Semi-Circular – Loose Lay – 150cm x 75cm  | 17036380 |
| Semi-Circular – Loose Lay – 200cm x 100cm | 17036392 |
| Circular Logo Loose-Lay – 150cm x 150cm   | 16414317 |
| Circular Logo Loose-Lay – 200cm x 200cm   | 16414329 |

BS8300 COMPLIANT

LIFT & LAY SERVICE



# PPE message mats



## Key features

- Standard service is 26 p.a. (fortnightly)
- Monthly (13p.a.) & weekly (52p.a.) available
- Backing = 100% nitrile rubber
- Total thickness = 9mm
- Fire resistance = Cfl s1
- 18mm anti trip rubber border all around
- Bespoke mats i.e. dedicated stock
- Antistatic = <2kV
- BS8300 / DDA / ADA compliant
- Gripper or smooth backed
- 12 standard design choices
- Other designs available
- Indoor use only

## Available options

| Portrait |                    | Smooth or gripper |          |
|----------|--------------------|-------------------|----------|
| 150 x 85 | 1.27m <sup>2</sup> | 5 x 3             | 17026258 |



# Comfort anti-fatigue mats



Comfort and Ultraflow anti-fatigue mats are really useful in engineering environments where swarf is a problem.

**Tip:** think of all the locations where staff are required to stand for long periods, there could be many.

## Key features

- Standard service is 13 p.a. (monthly)
- Fortnightly (26 p.a.) available
- Nitrile foamed rubber
- Total thickness = 8mm
- Fire rating = UL94 HBF
- Reduces leg fatigue and noise
- Antistatic properties
- APMA approved
- Helps address work related illness and injuries
- Impervious to chemical & oil based products
- Colour = Black
- Closed construction
- Internal use only



Employees standing up all day in areas like check-out stations, service counters, and assembly lines or behind bars need physical support to keep motivation and energy. The Comfort anti-fatigue mat concept is specially designed for safety, comfort and protection.

- Made from premium quality nitrile rubber, comfort mats are water resistant and resilient to impact.
- Can be transformational for employees who have to stand for long periods reducing leg fatigue and noise.

Comfort mats can be more competitively priced by offering at lower service intervals (i.e. 13p.a.).

## Available options

| Backing options: |                    | Foamed rubber |        |
|------------------|--------------------|---------------|--------|
| 84cm x 60cm      | 0.50m <sup>2</sup> | 3 x 2         | 003961 |
| 140cm x 84cm     | 1.17m <sup>2</sup> | 5 x 3         | 003962 |
| 180cm x 120cm    | 2.16m <sup>2</sup> | 6 x 4         | 005829 |
| 300cm x 85cm     | 2.70m <sup>2</sup> | 8 x 4         | 005831 |



# Ultraflow anti-fatigue mats



**Tip:** think of all the locations where staff work in wet conditions. Good for use externally in direct rainfall areas

i.e. schools as a scraper mat.

## Key features

- Standard service is 13 p.a. (monthly)
- Fortnightly (26 p.a.) available
- Total thickness = 8mm
- Fire rating = UL94 HBF
- Reduces leg fatigue & lower back pain
- Antistatic properties
- Excellent slip resistance in wet areas
- Helps address slips and trips at work
- Impervious to chemical & oil based products
- Anti microbial properties
- Colour = Black
- Open construction for drainage



Providing extra support for employees standing on their feet for prolonged periods, Ultraflow mats are a comfort mat especially designed for wet areas such as bars and kitchens.

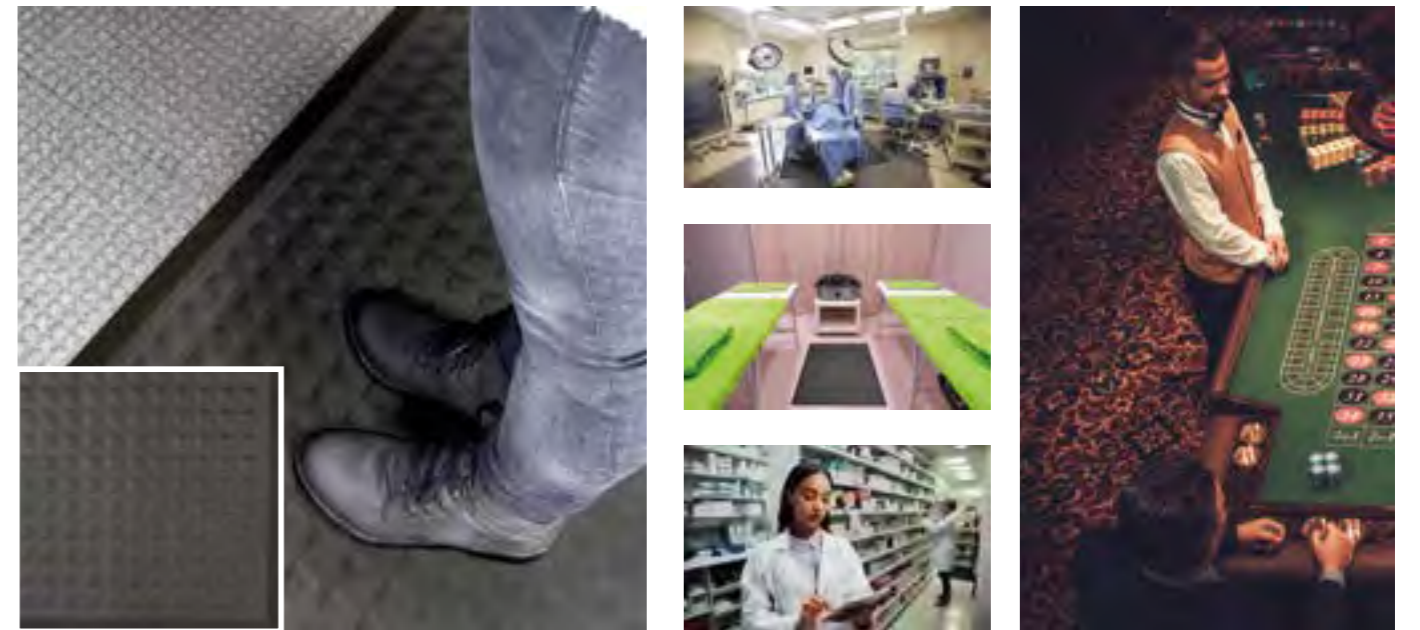
- Designed for use in wet areas as the surface texture prevents slips, the holes allow water to escape and the studded pattern on the bottom directs drainage.
- Can be transformational for employees who have to stand for long periods, as it reduces leg fatigue, along with noise.

Ultraflow mats can be more competitively priced by offering at lower service intervals (i.e. 13p.a.)

| Two Sizes Only |                    |        |          |
|----------------|--------------------|--------|----------|
| 86cm x 54cm    | 0.46m <sup>2</sup> | 3 x 2  | 17039277 |
| 86cm x 142cm   | 1.14m <sup>2</sup> | 3 x 4½ | 106379   |



# Premium anti-fatigue indoor mats



Premium anti fatigue mats are anti-microbial, mats that can be autoclave sterilised and commercially laundered.

## Key features

- Ergonomically superior anti-fatigue mat.
- Textured surface offers superior slip and skid resistance.
- Bevelled edges create a smooth floor-to-mat transition, reducing slip and falls.
- 100% Nitrile Rubber
- Anti-microbial treatment reduces odours by inhibiting the growth of germs and bacteria.
- Lightweight and easy to clean.

## Available options

| Specifications                     |                                   |          |
|------------------------------------|-----------------------------------|----------|
| Premium Anti Fatigue mat loose lay |                                   |          |
| Standard sizes (cm)                | 60x90*                            | 90x150*  |
| Thickness                          | 13 mm                             |          |
| Type                               | Closed cell Nitrile Sponge Rubber |          |
| Code                               | 17036252                          | 17036264 |

Size Tolerance: +/- 5%  
\*In stock



# Slip Safety Service

Reduce the risk of slip accidents

Do you have a current certificate to defend your business in case of a slip accident on your site?

Pendulum Slip testing is the standard test method used by HSE to assess wet and dry floor slipperiness. Caution Wet Floor signs do not mitigate liability on floors that are unsafe they just highlight the issue that needs addressing.

**phs** can undertake this testing in your premises. Providing you with a detailed analysis with recommendations for improvements.

**Ensuring your premises are safe and compliant.**

- Slips are the most common cause of accident, injury & claims.
- An average claim is £10k but the true cost of an accident is £100k+
- Insurance premiums are rising all the time and given that slips are 33% of claims, managing that risk has never been more important
- If you are able to provide evidence of compliant results, not only will you see fewer accidents, but it will help to defend claims

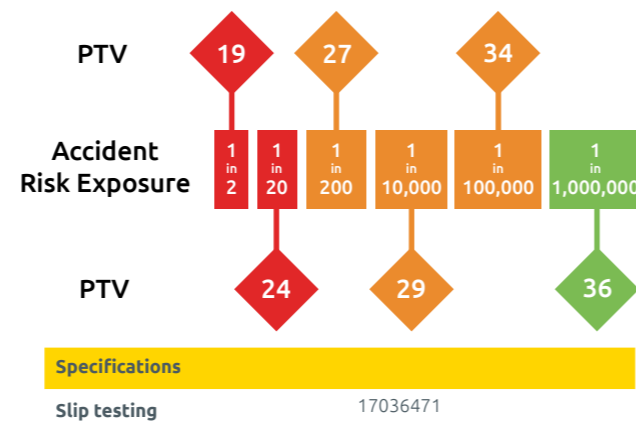
We conduct testing for insurers, lawyers, floor suppliers, FM companies and, of course, many businesses. Our testing includes a detailed, court-ready report, including test Chimes results, findings and recommendations.



Excluding Northern Ireland



Slip test Pendulum  
Lead time: 3-4 weeks



# Contamination mat



Introducing the contamination mat, an effective way to sanitise footwear and wheeled equipment as they enter a room or building. Welfare Essentials for a feel good workplace



## Contamination Mats

A heavy duty brush fibre mat with sanitising liquid to scrub and disinfect the soles of footwear. Contamination mats can be used to create a barrier to prevent viruses being spread through buildings.

## Special Service

This mat is available from **phs** on a 13 pa service.

Mats are provided in a set of 3 mats -

- one on-site on the ground
- one on-site in the cleaner's cupboard
- one in the phs laundry

Every service visit we will change the mat in the cleaner's cupboard only for a freshly laundered mat.

The mat on the floor is there for the customer to prime with the correct sanitising fluids required for their operational needs on daily basis.

## Specifications

|                    |          |            |
|--------------------|----------|------------|
| Contamination Mats | 17037300 | 150 x 85cm |
|--------------------|----------|------------|

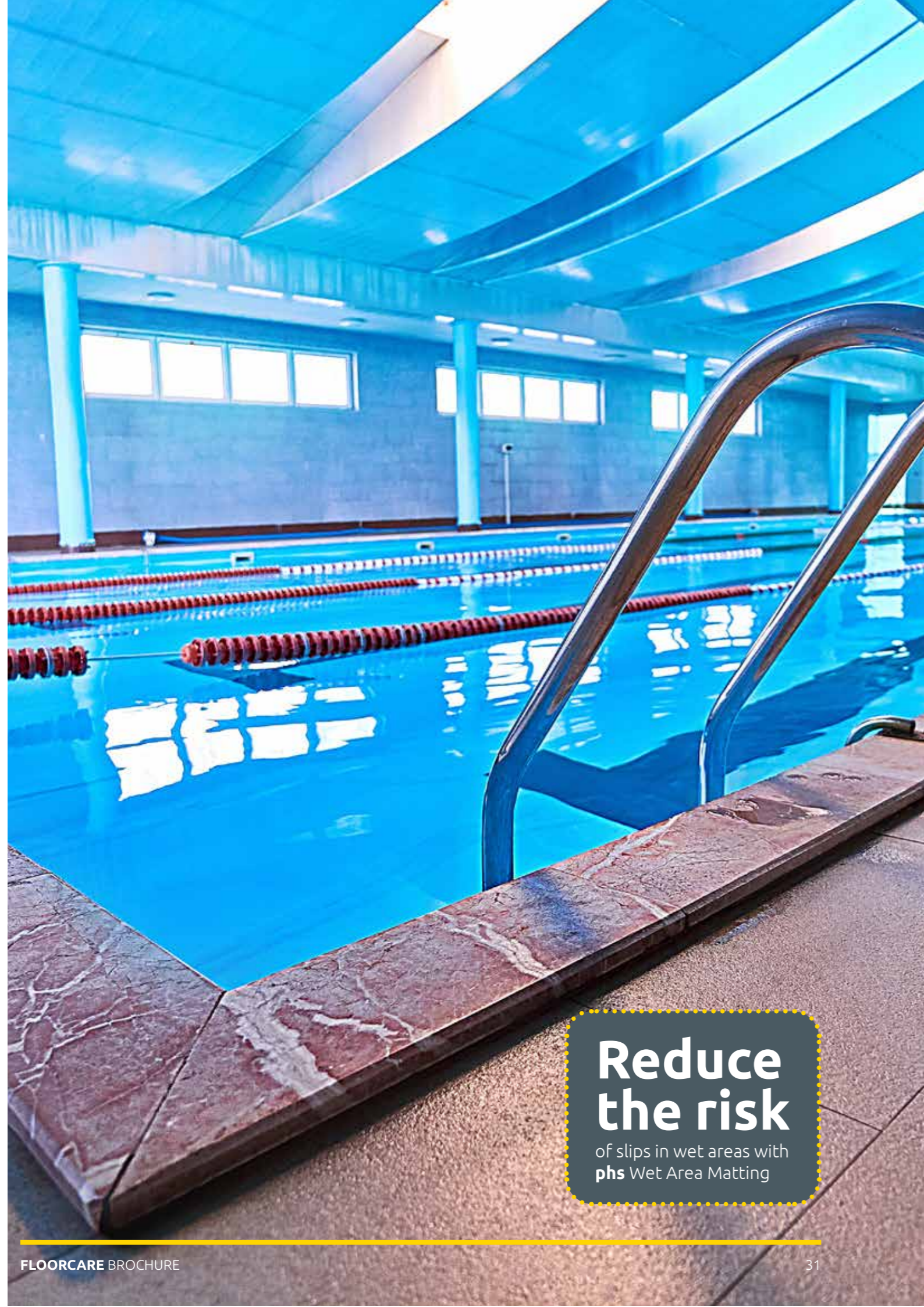


## Key features

- Spill Control borders allow for containment of up to 4.1 ltrs of disinfecting liquid per m<sup>2</sup>
- Mono Filament Brush fibres scrub soles clean to remove dirt
- Resistant to most chemicals such as bleach and other disinfectant solutions
- Nitrile rubber backing offers excellent slip resistance

## Key benefits

- Reduce the risk of contamination in your premises by preventing the spread of bacteria
- Mat can be filled with a disinfection solution to meets your specific needs
- Brush fibre surface cleans soles of footwear to stop the spread of dirt



**Reduce the risk**  
of slips in wet areas with  
**phs Wet Area Matting**

# Wet area matting

**Not for use in the shower cubicle!**

Durable Wet Area Matting for indoor and outdoor use.



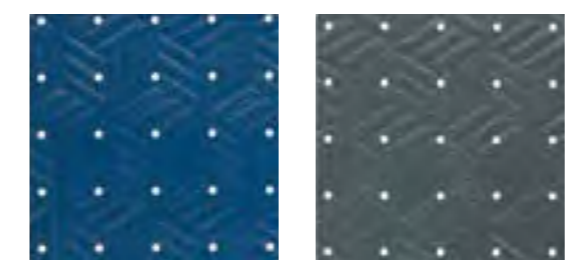
Leisure areas including locker rooms, showers, pools, and spas.

Must be outside shower and not inside shower tray.



- Key features**
- Slip resistant for increased safety in wet area
  - Comfortable for users to walk on
  - Hygienically treated with anti-microbial treatment
  - Made from durable closed-cell nitrile rubber that is UV resistant
  - Available on a lift and lay cleaning service

- Safety standards**
- Certified high-traction by the National Floor Safety Institute (NFSI)
  - Passes flammability standard CPSC-FF1-70
  - ASTM C1028-96 Static Coefficient of Friction: Dry 0.99 Wet 0.82



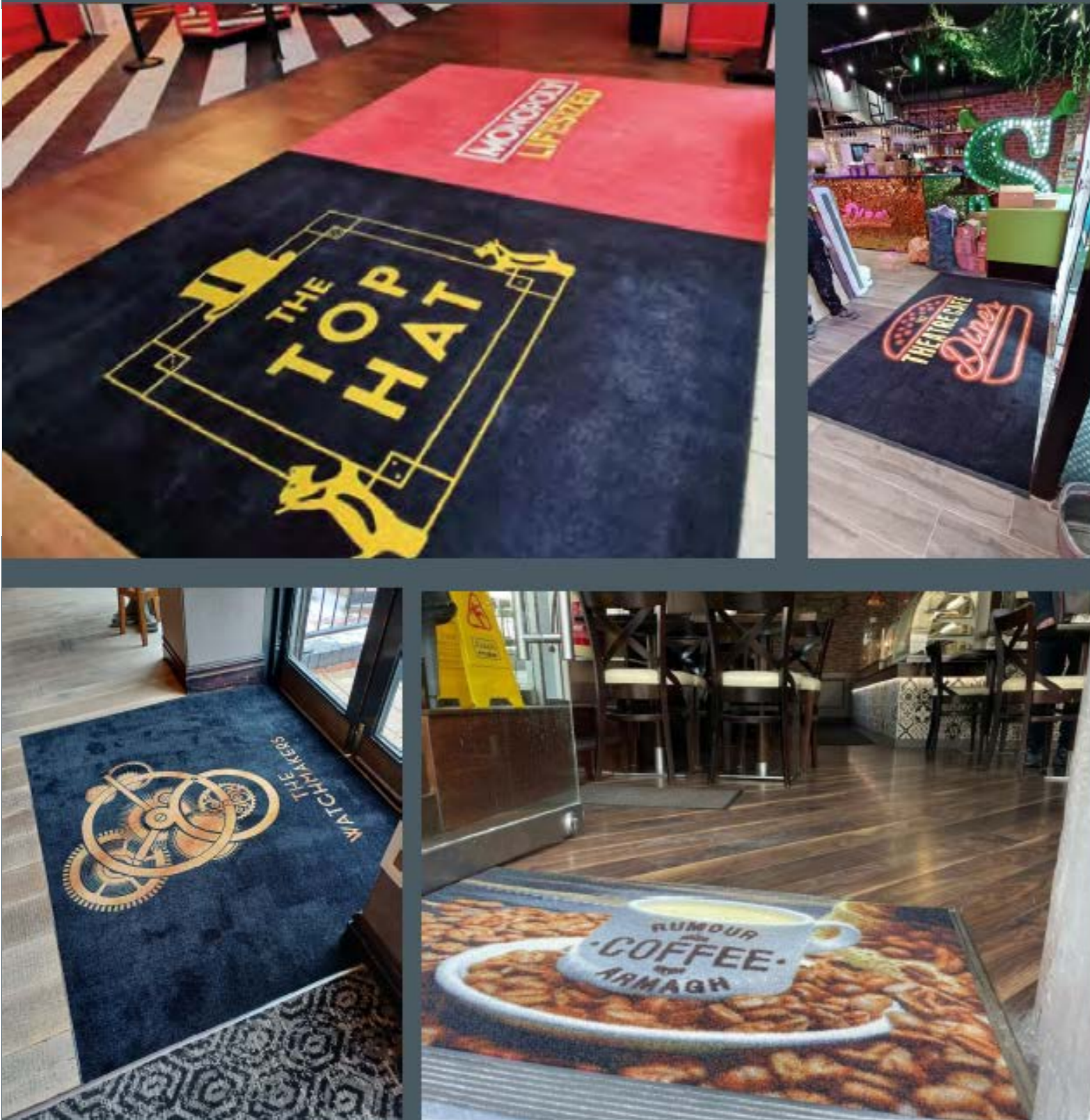
Material: High-density, closed-cell nitrile rubber foam  
Thickness: 6.35mm

**Available options**

| Colour | Size         | Product Code |
|--------|--------------|--------------|
| Blue   | 60cm x 90cm  | 17036513     |
|        | 90cm x 150cm | 17036525     |
|        | 90cm x 300cm | 17036537     |
| Grey   | 60cm x 90cm  | 17036549     |
|        | 90cm x 150cm | 17036550     |
|        | 90cm x 300cm | 17036562     |



# Fitted Lift and Lay matting solutions



# Lift car mats – logo / image



## Key features

- Standard service is 26 p.a. (fortnightly)
- Monthly (13p.a) & weekly (52p.a.) available
- Backing = 100% nitrile rubber DMS
- Total thickness = 10-11mm
- Fire resistance = Cfl s1
- Bespoke mats i.e. dedicated stock
- Antistatic = <2kV
- BS8300 / DDA / ADA compliant
- 150 colour choices which can be made into 5 million variations through shading
- Bespoke sizes are available
- HD344 can not be used as a background colour
- Try to use dark practical background colours
- Jpeg hi resolution images are best for image mats
- Internal Use only

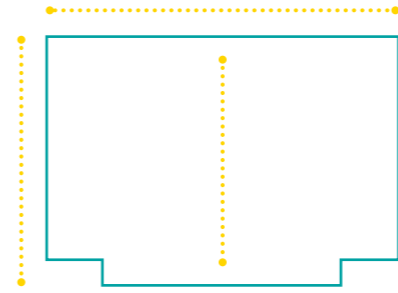
**TWISTING & TURNING...**

Footfall in lift cars is more intense due to the twisting action in such a confined space

**Options:**

|                                    |          |
|------------------------------------|----------|
| Measures up to 1.275m <sup>2</sup> | 17022897 |
| Measures up to 2.16m <sup>2</sup>  | 17022903 |
| Measures up to 2.88m <sup>2</sup>  | 17022915 |
| Measures up to 3.6m <sup>2</sup>   | 17022927 |
| Measures up to 3.96m <sup>2</sup>  | 17022939 |

- Avoid using light colours for backgrounds as mats are placed on the floor and therefore need to be practical



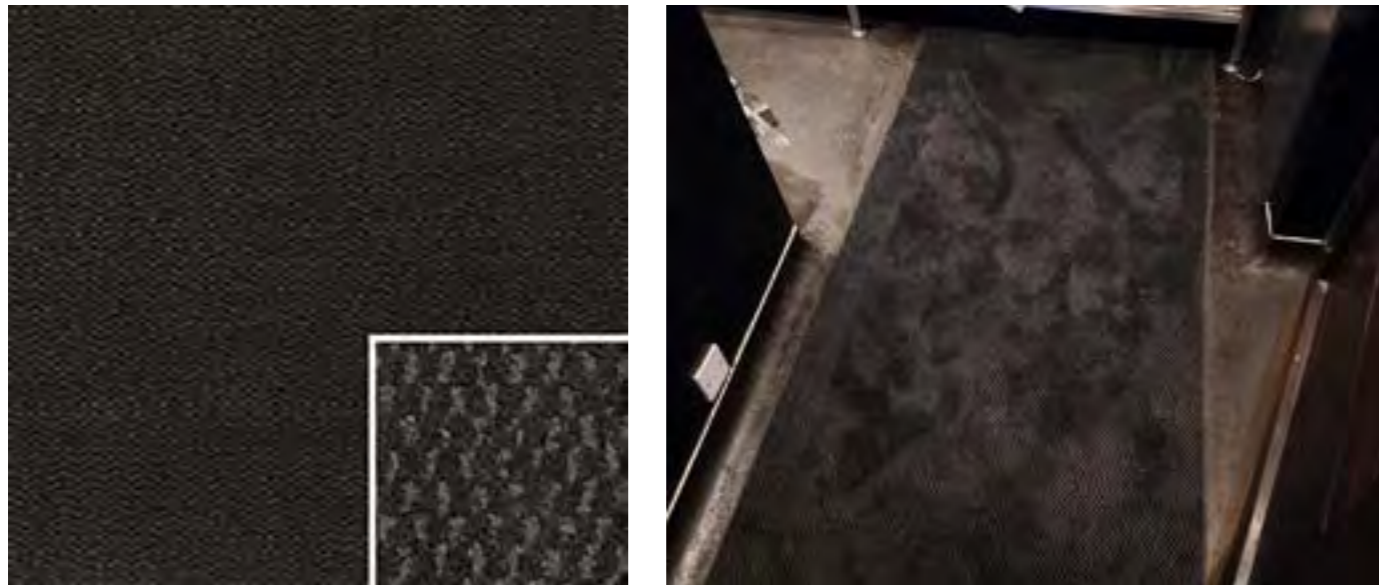
In the majority of cases Lift Car mats are rectangles and can be measured as indicated.

We always try to avoid right angle cuts in Lift Cars as these can lead to tears in the wash process.

- Avoid using light colours for backgrounds as mats are placed on the floor and therefore need to be practical



# Ultra plus fitted mats



Also available in a fitted lift and lay mat option.

## Key features

- Standard service is 26 p.a. (fortnightly)
- Monthly (13p.a.) & weekly (52p.a.) available
- Backing = 100% nitrile rubber
- Total thickness = 10-11mm
- Fire resistance = Dfl-s1
- 20mm anti-trip rubber border all around
- Antistatic = <2kV
- Yarn = 100% ECONYL®
- BS8300 / DDA / ADA compliant
- Colours: graphite only
- Gripper or smooth backed choice
- 32% more soil/moisture capture than standards
- Ideal sink mat for use in washrooms
- Heavy duty micromix pile 66%/33%
- Indoor use only

## Available options

| Backing options:                           | Gripper or smooth |
|--|-------------------|
| Bespoke Ultra Plus – Fitted – Up to 1.275M | 17036203          |
| Bespoke Ultra Plus – Fitted – Up to 2.07M  | 17036215          |
| Bespoke Ultra Plus – Fitted – Up to 2.76M  | 17036227          |
| Bespoke Ultra Plus – Fitted – Up to 3.75M  | 17036239          |
| Bespoke Ultra Plus – Fitted – Up to 3.9M   | 17036240          |

NB - Maximum width available is 140cm for fitting



Maximum width is 150cm you can go any size in the opposite direction as long as you are within 3.9sqm. Also available fitted in any matwell upto 3.9sqm

**32% more absorbent than a standard mat**

## Product Specification

|           |  |
|-----------|--|
| Sizes     | 120x85cm, 150x85cm, 180x115cm, 240x85cm, 350x115cm |
| Thickness | 7-12mm   |
| Colour    | Graphite Grey                                      |



# Planet Range fitted mats



Our planet range of mats offer limitless design opportunities. From creating a complete brand experience, to providing additional health and safety signage.

## Key features:

- New pattern developed to compliment dark grey, blue, brown and red in our forma and foris colour range
- Can be used as a patterned mat or logo mat
- Please note that the planet range of fleck patterned colours are not an exact match to our Forma and Foris range of colours due to the different textile used in the product
- Available in any bespoke size up to 4.2sqm (loose-lay) and up to 3.9sqm (fitted)

## Options:

|   |          |
|---|----------|
| Planet Range - Fitted - Up to 1.275M          | 17035284 |
| Planet Range - Fitted - Up to 2.07M           | 17035296 |
| Planet Range - Fitted - Up to 2.76M           | 17035302 |
| Planet Range - Fitted - Up to 3.75M           | 17035314 |
| Planet Range - Fitted - Up to 3.9M            | 17035326 |
| Planet Range Logo Mat - Fitted - Up to 1.275M | 17035338 |
| Planet Range Logo Mat - Fitted - Up to 2.07M  | 17035340 |
| Planet Range Logo Mat - Fitted - Up to 2.76M  | 17035351 |
| Planet Range Logo Mat - Fitted - Up to 3.75M  | 17035363 |
| Planet Range Logo Mat - Fitted - Up to 3.9M   | 17035375 |

Also available fitted in any matwell upto 3.9sqm



# Logo / image fitted mats



## Key features

- Standard service is 26 p.a. (fortnightly)
- Monthly (13p.a.) & weekly (52p.a.) available
- Backing = 100% nitrile rubber DMS
- Total thickness = 10-11mm
- Fire resistance = Cfl s1
- Bespoke mats i.e. dedicated stock
- Antistatic = <2kV
- BS8300 / DDA / ADA compliant

- Avoid using light colours for backgrounds as mats are placed on the floor and therefore need to be practical

| Options:                           |        |
|------------------------------------|--------|
| Measures up to 1.275m <sup>2</sup> | 006818 |
| Measures up to 2.07m <sup>2</sup>  | 006819 |
| Measures up to 2.76m <sup>2</sup>  | 006820 |
| Measures up to 3.75m <sup>2</sup>  | 007479 |
| Measures up to 3.9m <sup>2</sup>   | 006821 |

Note: Lead time is 5- 6 weeks

- 100 colour choices which can be made into
- Bespoke sizes are available up to max. 3.9m
- Try to use dark practical background colours
- Jpeg hi resolution images are best for image mats
- Internal use only



## DID YOU KNOW?

On average an entrance mat absorbs so much material that it becomes ineffective after two weeks of use.

# Printed plain colour fitted mats



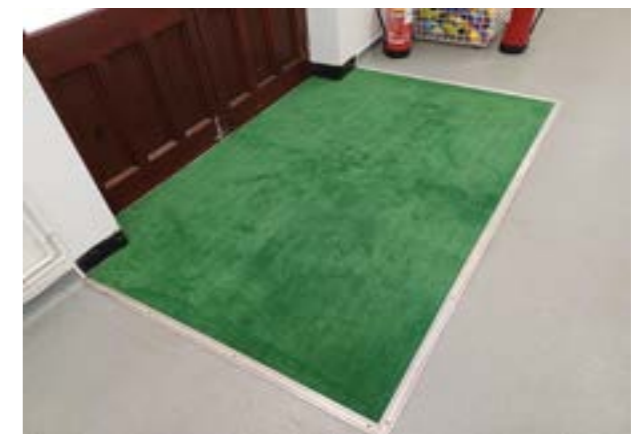
- Avoid using light colours as mats are placed on the floor and therefore need to be practical

## Key features

- Standard service is 26 p.a. (fortnightly)
- Monthly (13p.a.) & weekly (52p.a.) available
- Backing = 100% nitrile rubber DMS
- Total thickness = 10-11mm
- Fire resistance = Cfl s1
- Bespoke mats i.e. dedicated stock
- Antistatic = <2kV
- BS8300 / DDA / ADA compliant

- 100 colour choices
- Bespoke sizes are available up to max. 3.9m
- Internal use only
- Do not use light colours as backgrounds!

Measure the matwell and select the size which will cover the area you want to install.



| Options:                           |        |
|------------------------------------|--------|
| Measures up to 1.275m <sup>2</sup> | 107956 |
| Measures up to 2.07m <sup>2</sup>  | 107957 |
| Measures up to 2.76m <sup>2</sup>  | 107958 |
| Measures up to 3.75m <sup>2</sup>  | 107959 |
| Measures up to 3.9m <sup>2</sup>   | 107960 |

Maximum width or length is 185cm you can go any size in the opposite direction as long as you are within 3.9sqm

NB. Fitted mats can only be installed into an existing matwell or into carpeted areas. They can not be installed into a hard floor area.

Note: Lead time is 5- 6 weeks

# Permanent fitted matting solutions



**ECONYL®**  
Made with 100% Regenerated Nylon

## Forma HD – plain

Fitted Entrance Matting System



Forma HD ideal for heavy duty areas, will fit any size area with no limitation on size. Adhered to floor, so no movement or shrinkage issues. The 12mm Forma version can be surface mounted without a matwell as long as there is door clearance. Forma HD is for internal use areas only.

### Key features

- Standard service is 4 p.a. (quarterly)
- Serviced on site
- Yarn = 100% ECONYL®
- Backing = 100% recyclable PVC
- 12mm option shallow wells and surface mounted
- 18mm option deep wells 18mm and above
- Permanently fitted adhered down on site
- Fire resistance = Bfl s1
- Antistatic = <2kV
- Wear resistance heavy to severe
- BS8300 / DDA / ADA compliant
- 5 colour choices
- Indoor use only

**Please Note:** 10cm is added to the size of each mat in both directions as standard procedure by the logo's team to give the fitter the material required to cut. If Screeding, Plywood, PVC or Aluminium ramped edging is required use code 005833



Note: Lead time is 5- 6 weeks

## Forma HD – logo

Forma incorporating a fitted Logo Mat



Forma HD serviced on site quarterly with inset fitted Logo mat service via service driver fortnightly.

Use the Forma HD code below plus the size of fitted Logo mat code.

Always confirm with the customer the size of their fitted logo mat and where they would like it positioned.

| Forma HD Options:                  | FHD 12mm    | FHD 18mm |
|------------------------------------|-------------|----------|
| Measures up to 2.23m <sup>2</sup>  | 108156      | 136296   |
| Measures up to 3.34m <sup>2</sup>  | 108157      | 136297   |
| Measures up to 4.46m <sup>2</sup>  | 108158      | 136298   |
| Measures up to 5.57m <sup>2</sup>  | 108159      | 136299   |
| Measures up to 6.69m <sup>2</sup>  | 108160      | 136300   |
| Measures up to 7.8m <sup>2</sup>   | 108161      | 136301   |
| Measures up to 8.92m <sup>2</sup>  | 108162      | 136302   |
| Measures up to 10.03m <sup>2</sup> | 108163      | 136303   |
| Measures up to 11.15m <sup>2</sup> | 108164      | 136304   |
| Measures up to 13.94m <sup>2</sup> | 108165      | 136305   |
| Measures up to 18.58m <sup>2</sup> | 108166      | 136306   |
| Measures up to 24.16m <sup>2</sup> | 108167      | 136307   |
| Measures over 24.17m <sup>2</sup>  | See pricing |          |

| Logo Mat Size Options:             |        |
|------------------------------------|--------|
| Measures up to 1.275m <sup>2</sup> | 006818 |
| Measures up to 2.07m <sup>2</sup>  | 006819 |
| Measures up to 2.76m <sup>2</sup>  | 006820 |
| Measures up to 3.75m <sup>2</sup>  | 007479 |
| Measures up to 3.9m <sup>2</sup>   | 006821 |

# Quadra HD - Plain & Logo

Fitted Entrance Matting System - Internal only



Quadra HD is serviced on site quarterly by the Matwell Cleaning Team and can also incorporate a fitted logo mat inset option at an extra price which is serviced fortnightly by the service driver.

Use the Fitted Logo Mat Codes on page 42 in conjunction with the Quadra codes below for the inset Logo option.

Always confirm with the customer the size of their fitted logo mat and where they would like it positioned.



| Options:                           | Quadra HD 12mm |
|------------------------------------|----------------|
| Measures up to 3m <sup>2</sup>     | 17038911       |
| Measures up to 4.5m <sup>2</sup>   | 17038923       |
| Measures up to 6m <sup>2</sup>     | 17038959       |
| Measures up to 7.5m <sup>2</sup>   | 17038972       |
| Measures up to 9m <sup>2</sup>     | 17038984       |
| Measures up to 10.5m <sup>2</sup>  | 17039186       |
| Measures up to 12m <sup>2</sup>    | 17039198       |
| Measures up to 13.5m <sup>2</sup>  | 17039204       |
| Measures up to 15m <sup>2</sup>    | 17039216       |
| Measures up to 16.5m <sup>2</sup>  | 17039228       |
| Measures up to 18m <sup>2</sup>    | 17039230       |
| Measures up to 19.5m <sup>2</sup>  | 17039241       |
| Measures up to 21m <sup>2</sup>    | 17039253       |
| Measures up to 22.5m <sup>2</sup>  | 17039265       |
| Measures over 22.5m <sup>2</sup> + | See Pricing    |

Note: Lead time is 5- 6 weeks

## Key features

- Standard service is 4 p.a. (quarterly)
- Serviced on site
- Yarn = 100% ECONYL®
- Backing = 100% recycled PVC
- 12mm option shallow wells and surface mounted
- Permanently fitted adhered down on site
- Wear resistance heavy to severe
- BS8300 / DDA / ADA compliant
- Standard Colour: Anthracite 607to ordeer stocked
- Other colours available at additional cost
- Internal use only

**Please Note:** If Screeding, Plywood, PVC or Aluminium ramped edging is required use code 005833



# Tergo HD

Fitted Entrance Matting System – must be under a canopy



Tergo can also be combined with Forma, in internal areas to provide a scrape and absorb effect.

Tergo in an exterior sheltered matwell.

Ideal for heavy duty areas, will fit any size area no limitation on size, adhered to floor so no movement or shrinkage issues. Tergo HD is for external use areas under a canopy. Same textile as Tuff mats



## Key features

- Standard service is 4 p.a. (quarterly)
- Serviced on site
- Yarn = 100% ECONYL®
- Backing = 100% recyclable PVC
- 12mm option shallow wells and surface mounted
- 18mm option deep wells 18mm and above
- Permanently fitted adhered down on site
- Fire resistance = Bfl s1
- Antistatic = <2kV
- Wear resistance heavy to severe
- BS8300 / DDA / ADA compliant
- Single colour choice = grey
- External use under a canopy only

**Please Note:** If Screeding, Plywood, PVC or Aluminium ramped edging is required use code 005833



| Options:                             | FHD 12mm    | FHD 18mm    |
|--------------------------------------|-------------|-------------|
| Measures up to 2.23m <sup>2</sup>    | 16459386    | 16459544    |
| Measures up to 3.34m <sup>2</sup>    | 16459398    | 16459556    |
| Measures up to 4.46m <sup>2</sup>    | 16459404    | 16459568    |
| Measures up to 5.57m <sup>2</sup>    | 16459416    | 16459570    |
| Measures up to 6.69m <sup>2</sup>    | 16459428    | 16459581    |
| Measures up to 7.8m <sup>2</sup>     | 16459430    | 16459593    |
| Measures up to 8.92m <sup>2</sup>    | 16459441    | 16459600    |
| Measures up to 10.03m <sup>2</sup>   | 16459453    | 16459611    |
| Measures up to 11.15m <sup>2</sup>   | 16459465    | 16459623    |
| Measures up to 13.94m <sup>2</sup>   | 16459477    | 16459635    |
| Measures up to 18.58m <sup>2</sup>   | 16459489    | 16459647    |
| Measures up to 24.16m <sup>2</sup>   | 16459490    | 16459659    |
| Measures over to 24.17m <sup>2</sup> | See Pricing | See Pricing |

Note: Lead time is 5- 6 weeks

# Foris - fitted - Plain & Logo

Internal only



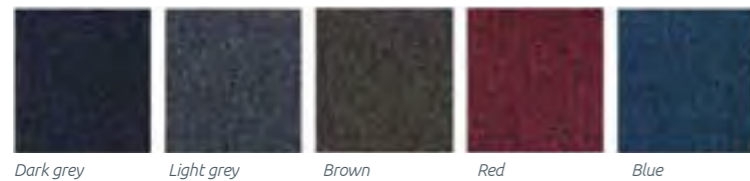
Foris is designed as a secondary matting system which would usually come after a Forma HD matwell or in alternatively in a shallow matwell which can not take Forma. Foris is available in the same colours as the Forma HD and is 100% ECONYL®.

Use the Fitted Logo Mat Codes on page 42 in conjunction with the Quadra codes below for the inset Logo option.

If you are supplying a inset logo fitted within Foris always confirm with the customer the size of their fitted logo mat and where they would like it positioned.

## Key features

- Standard service is 4 p.a. (quarterly)
- Serviced on site
- Yarn = 100% ECONYL®
- Backing = 100% recyclable PVC
- 9-10mm shallow wells and surface mounted
- Permanently fitted adhered down on site
- Fire Resistance = Bfl s1
- Antistatic = <2kV
- Wear resistance medium to heavy
- BS8300 / DDA / ADA compliant
- 5 colour choices
- Internal use only



**Please Note:** If Screeding, Plywood, PVC or Aluminium ramped edging is required use code 005833

| Options:                           | Foris 10mm |
|------------------------------------|------------|
| Measures up to 2.23m <sup>2</sup>  | 16459192   |
| Measures up to 3.34m <sup>2</sup>  | 16459209   |
| Measures up to 4.46m <sup>2</sup>  | 16459210   |
| Measures up to 5.57m <sup>2</sup>  | 16459222   |
| Measures up to 6.69m <sup>2</sup>  | 16459234   |
| Measures up to 7.8m <sup>2</sup>   | 16459246   |
| Measures up to 8.92m <sup>2</sup>  | 16459258   |
| Measures up to 10.03m <sup>2</sup> | 16459260   |
| Measures up to 11.15m <sup>2</sup> | 16459271   |
| Measures up to 13.94m <sup>2</sup> | 16459283   |
| Measures up to 18.58m <sup>2</sup> | 16459295   |
| Measures up to 24.16m <sup>2</sup> | 16459301   |
| Measures up to 30.66m <sup>2</sup> | 16459313   |
| Measures up to 37.16m <sup>2</sup> | 16459325   |
| Measures up to 44.60m <sup>2</sup> | 16459337   |
| Measures up to 55.75m <sup>2</sup> | 16459349   |

Note: Lead time is 5- 6 weeks

# PHS Smart Step – fitted

Internal only

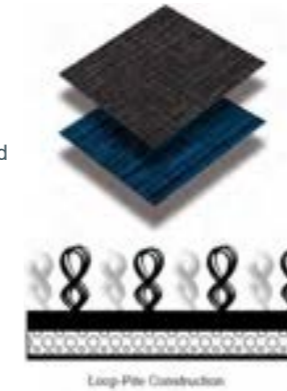


PHS Smart Step is an exceptionally versatile modular entrance matting system that creates a stunning first impression in spaces that need to create an effective barrier against the elements.

Designed to provide a superior combination of performance and aesthetics, the ECONYL® dual-fibre loop polyamide yarn construction will stop dirt and moisture at the door, while allowing easy removal during maintenance. The tiles are supplied in 50cm x 50cm size and in a 9.9mm gauge with each box containing 12 tiles which assemble to 3m<sup>2</sup>.

## Key features

- Standard service is 4 p.a. (quarterly)
- Serviced on site
- Yarn = 100% ECONYL®
- Backing = 100% PVC Free
- 9.9mm shallow wells and surface mounted
- Permanently fitted adhered down on site
- Fire Classification = Cfl s1
- Antistatic = <3.5kV
- Wear resistance medium to heavy
- BS8300 / DDA / ADA compliant
- 4 colour choices
- Internal use only



| Options:                           | Smart Step 9.9mm |
|------------------------------------|------------------|
| Measures up to 2.30m <sup>2</sup>  | 17038030         |
| Measures up to 3.34m <sup>2</sup>  | 17038042         |
| Measures up to 4.46m <sup>2</sup>  | 17038054         |
| Measures up to 5.57m <sup>2</sup>  | 17038066         |
| Measures up to 6.69m <sup>2</sup>  | 17038078         |
| Measures up to 7.8m <sup>2</sup>   | 17038080         |
| Measures up to 8.92m <sup>2</sup>  | 17038091         |
| Measures up to 10.03m <sup>2</sup> | 17038108         |
| Measures up to 11.15m <sup>2</sup> | 17038110         |
| Measures up to 13.94m <sup>2</sup> | 17038121         |
| Measures up to 18.58m <sup>2</sup> | 17038133         |
| Measures up to 24.16m <sup>2</sup> | 17038145         |
| Measures up to 30.66m <sup>2</sup> | 17038157         |
| Measures up to 37.16m <sup>2</sup> | 17038169         |
| Measures up to 44.60m <sup>2</sup> | 17038194         |
| Measures up to 55.75m <sup>2</sup> | 17038200         |

Note: Lead time is 5- 6 weeks

# Megahold & Anka-pad

Internal only

Megahold is a specialist backing option available from PHS specifically designed for hard floor surface to improve mat stability and help prevent movement. In combination with our unique Anka-pad system, the Megahold also solves mat movement problems on textile surfaces such as carpets.



➤ Ideal for heavy traffic areas such as retail, shopping centres and airports



| Options:                            | Code     |
|-------------------------------------|----------|
| Ultra Plus - Megahold - 85 x 150cm  | 17037890 |
| Ultra Plus - Megahold - 115 x 180cm | 17037906 |
| Ultra Plus - Megahold - 85 x 300cm  | 17037918 |

| Options:                      | Code     |
|-------------------------------|----------|
| Logo - Megahold - 85 x 150cm  | 17037920 |
| Logo - Megahold - 115 x 180cm | 17037931 |
| Logo - Megahold - 85 x 300cm  | 17037943 |

| Options:                       | Code     |
|--------------------------------|----------|
| Plain - Megahold - 85 x 150cm  | 17037955 |
| Plain - Megahold - 115 x 180cm | 17037967 |
| Plain - Megahold - 85 x 300cm  | 17037979 |



Megahold unique suction cup design

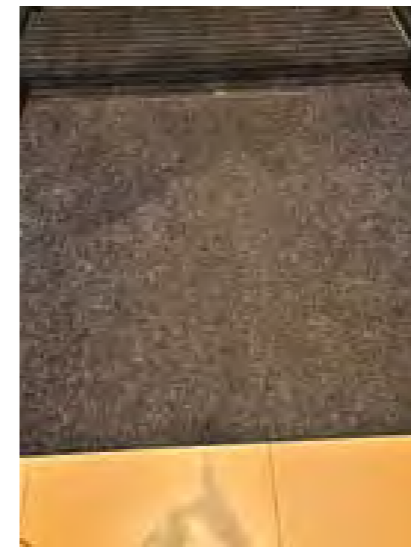


Megahold with Anka-Pad

| Carpet Option:               | Code     |
|------------------------------|----------|
| Anka-Pad Medium - 70 x 130cm | 17037980 |
| Anka-Pad Large - 95 x 160cm  | 17037992 |

# Fixed entrance mat cleaning

Internal only



Before cleaning



After cleaning



Our team of mat cleaners will attend your site and give a regular clean to customers' own fixed entrance matting. For areas larger than 30 sqm, please contact the floorcare team. Cleaning matting prolongs its life and we can offer our own replacement products when mats lose their effectiveness. Without regular deep cleaning, fixed entrance mats will wear quicker and be less effective as a barrier to dirt and water.

For confirmation on whether your matting is able to be serviced, please send a picture to our Floorcare team.



### ➤ Key features

- Standard service is 4 p.a. (quarterly)
- Serviced on site
- Indoor mats only
- Best results on mats with textile component
- Avoid all coir matting
- Effective on most types of entrance mat

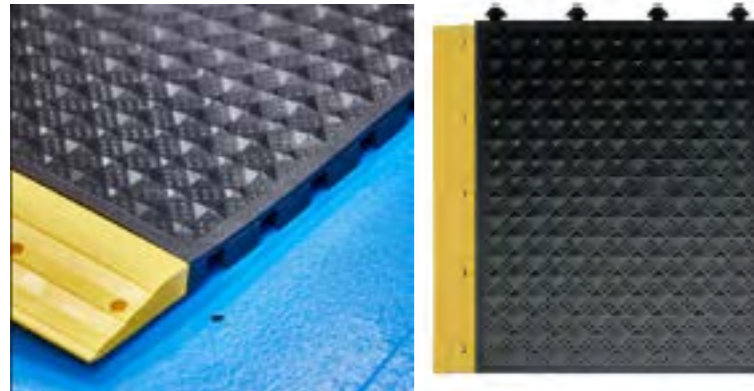
| Options:  | Code:    |
|---|----------|
| Fixed Entrance Matting Clean less than 10sqm    | 16408135 |
| Fixed Entrance Matting Clean less than 10-30sqm | 16408147 |





# PHS Work Matta™ – fitted

 Our recycled products are made from at least 85% recycled materials.



PHS Work Matta™ is a 25mm modular, anti-fatigue surfacing engineered to tolerate the harsh conditions of industrial and manufacturing environments whilst promoting well being and fighting fatigue.

## Key features

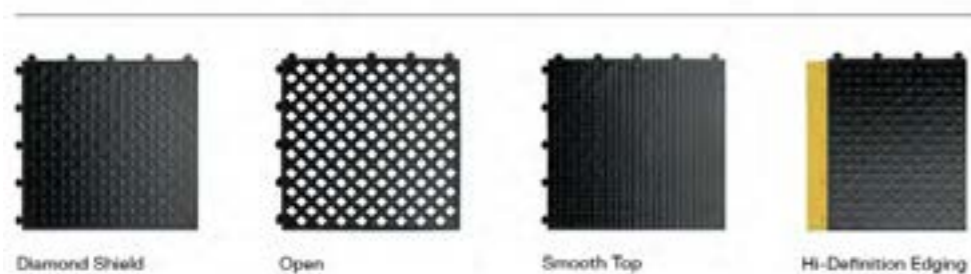
- Annual safety Inspection (1 pa)
- 3 or 5 Year Agreements
- Made from 85%+ recycled content
- End of life recyclable product
- ASTM, ADA & UFAS Accessibility Standards
- Wear resistance heavy to extreme
- Available in Grit Finish for oily environments
- Available in open or closed formats

All Work Matta™ flooring tiles utilise a unique compression column construction, specifically engineered to encourage proper body alignment, while promoting a calculated degree of movement or 'sway'. This almost imperceptible motion stimulates the muscles and promotes the efficient circulation of blood through the veins – especially in the legs – which is key to preventing worker fatigue and discomfort.

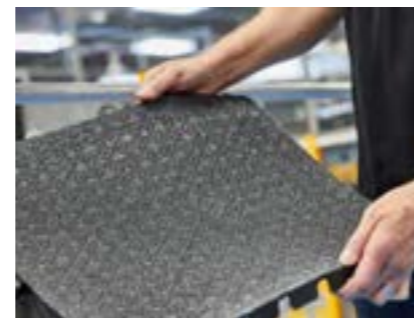
### WHY ARE ERGONOMICS SO IMPORTANT?

Oxygenated blood is pumped by the heart, through arteries, around our body which uses the oxygen as fuel. The blood then returns, via the veins, to our heart and lungs for 'refueling' and the process begins again with re-circulation of oxygenated blood through the arteries. Blood pressure and the normal contracting and relaxing of muscles around veins as we move, facilitates the return journey of blood through the one-way valve system in veins. This process can be inhibited when we have to stand on a hard surface or our movement is restricted for prolonged periods. Work Matta™ ergonomic flooring is designed to help promote efficient blood circulation.

### SURFACE OPTIONS



**Product Code:** Work Matta 25mm  
Spw Mark Gamble or Paul Hipkiss 17037256

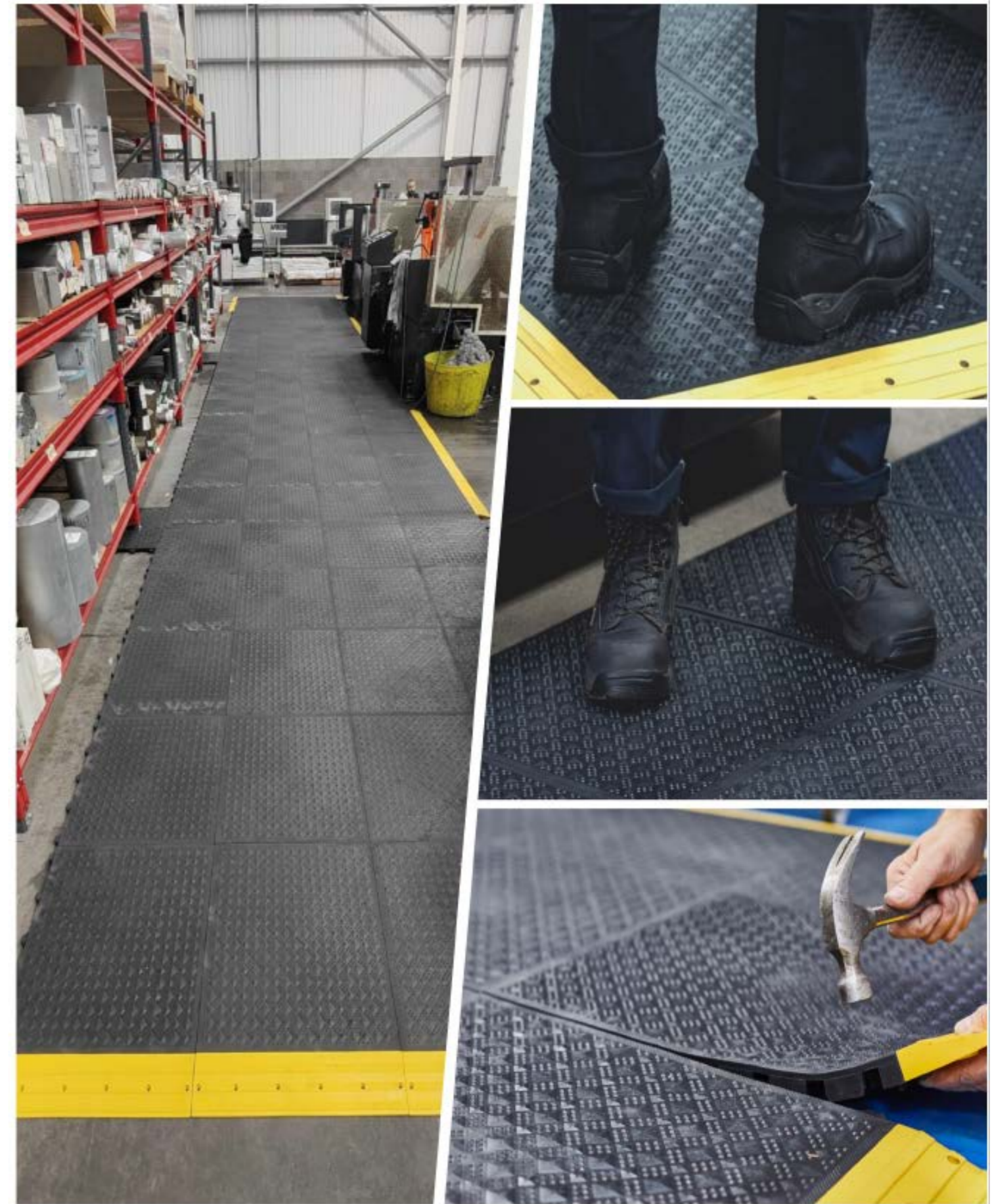


Grit Finish for Oily environments

Tile Size: 500mm x 500mm  
(50cm x 50cm)

Edge size: 100mm x 500mm  
(10cm x 50cm)

Survey required by Floorcare Specialist







phs Group

- Wash
- Work
- Treat
- Health
- Speci

Matting

5 RFE

www.phs

029 2