





## > Why phs washroom hygiene?

Visitors use washrooms to help them make a judgement about an organisation and how it's being managed.

It provides a window 'behind-the-scenes' - and a bad first impression can have a negative impact on an organisation. In fact, 64% of people would think twice about returning to a premise with a bad washroom.

To run a successful and profitable business means winning the confidence of visitors and employees. It also means complying with the requirements of regulatory bodies by demonstrating a professional knowledge of legislation and regulatory standards and having efficient practices in place to meet them.

**Having an experienced and reliable washroom hygiene services provider to help you manage these challenges can be invaluable, and this is where phs can help.**



Your washroom says more about your organisation than you realise. It speaks volumes to your employees and visitors about how your establishment is run and how it treats people. Providing a clean, pleasant and modern washroom is a positive reflection on your organisation and its values.

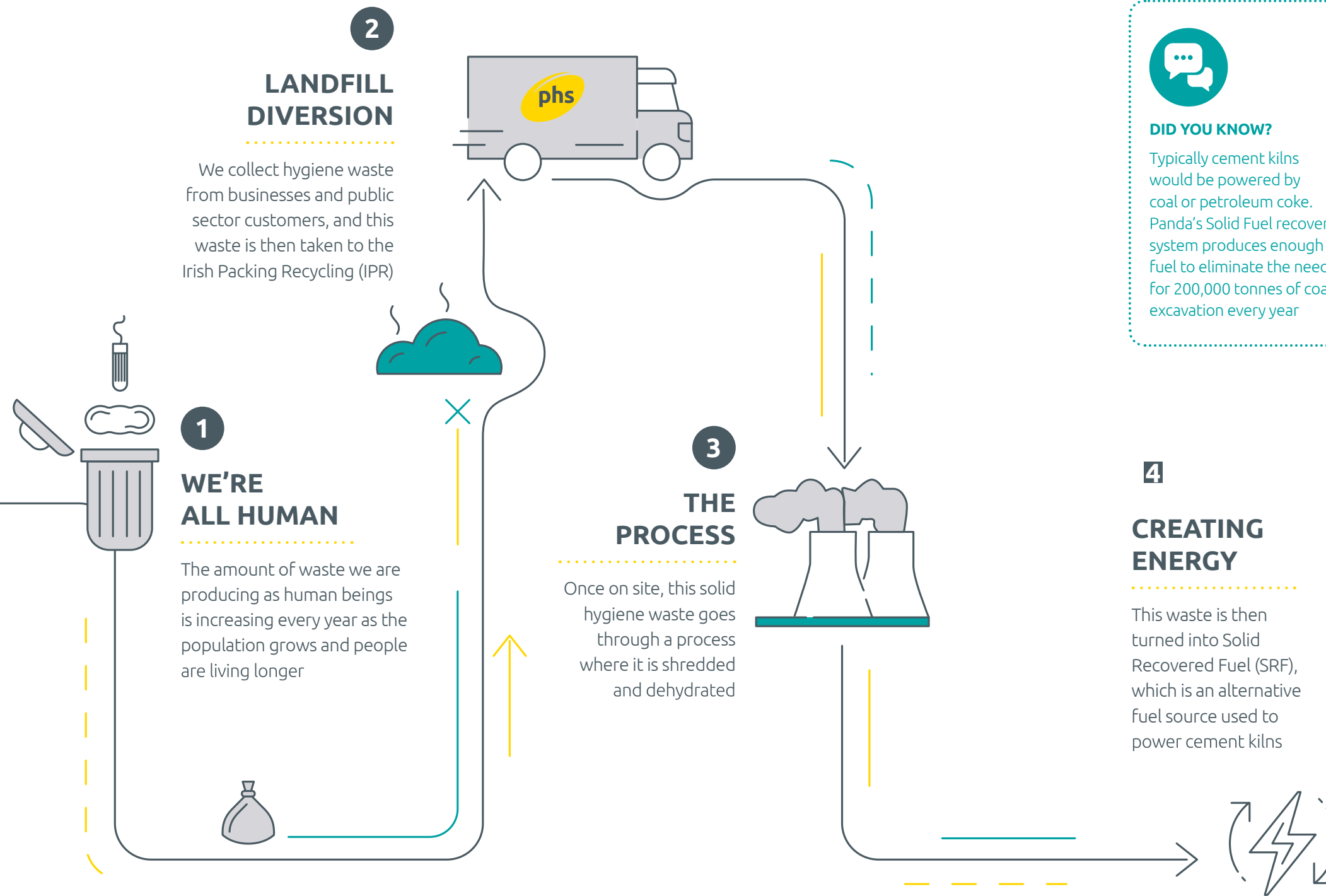


### DID YOU KNOW?

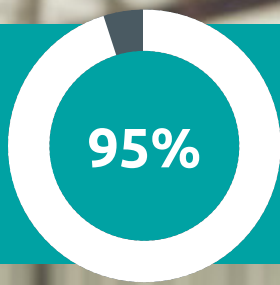
We supply washroom hygiene services to anywhere from Buckingham Palace to beach bars in Ibiza.

# phs LifeCycle Strategy

**> Transforming the future of waste management.**  
We turn our customers' waste into a valuable fuel source.



Through our LifeCycle Strategy we aim to divert as much as **95% of our customers' hygiene waste** away from landfill, by working with energy from waste suppliers across the UK and Ireland



**DID YOU KNOW?**

Typically cement kilns would be powered by coal or petroleum coke. Panda's Solid Fuel recovery system produces enough fuel to eliminate the need for 200,000 tonnes of coal excavation every year



---

# Carbon footprint

> **We have offset 8 tonnes of carbon dioxide**  
by reducing our carbon footprint...

Our commitment to reducing our carbon footprint is evident through our offsetting and our support of the Global Portfolio of Verified Carbon Reduction Projects.

By taking these steps, we're actively contributing to the fight against climate change and preserving our environment for future generations. Our dedication to sustainability has been recognised through the certification from Carbon Footprint™, reinforcing our ongoing efforts to make a positive impact on the planet.



---

> Further efficiencies have been achieved by changes to our collection and delivery methods, with drivers starting their journeys from home rather than work, enabling a reduction in the fleet of 18 vehicles and saving 40 tonnes of CO<sub>2</sub> per annum.

Our introduction of telematic systems to encourage safe and fuel-efficient driving across all sections of our fleet divisions (washroom, floorcare, healthcare vans and healthcare SCVs) has resulted in more efficient driving, leading to fuel savings of three to five per cent and further reductions in carbon dioxide emissions.



# Creating Washroom Equality



## Period equality in the workplace

- At **phs**, we believe in fostering a workplace culture that champions equality, inclusivity, and well-being for all employees.

We understand that access to period products is essential for your employees' comfort, dignity, and productivity. By partnering with **phs**, you not only support your colleagues with free period products in the workplace but also send a powerful message of support and inclusion.

We provide discreet and accessible help-yourself vending that offers a managed and hygienic method of distributing products, making them readily available in washrooms and common areas. This makes it convenient for your employees to access the resources they need during their menstrual cycle.

### What makes phs different?

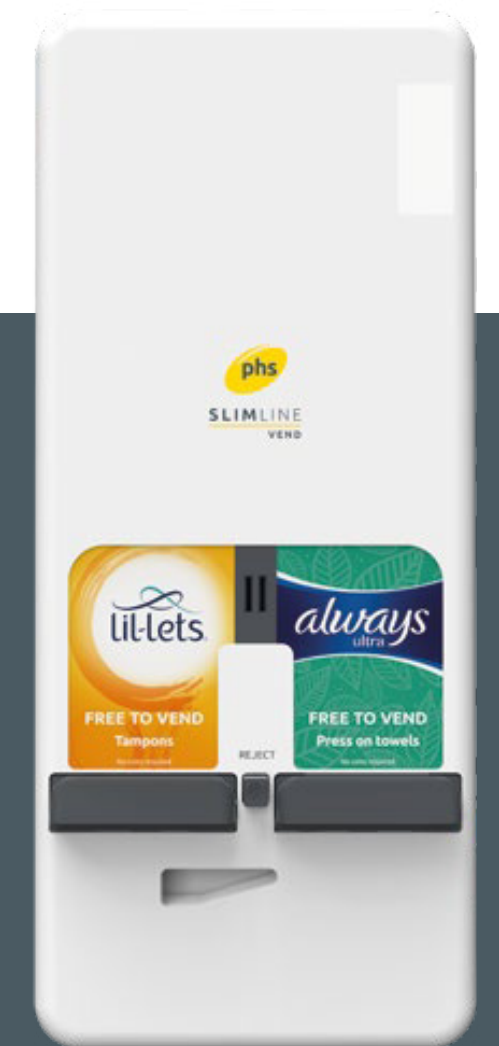
**phs** is committed to doing the right thing for our customers and our environment. Pursuing sustainable approaches to waste disposal such as generating power from waste rather than using landfill sites is part of that commitment.

Through our LifeCycle Strategy we aim to divert **as much as 95%** of our customers hygiene waste away from landfill, by working with energy from waste suppliers across the UK.

### What products are right for you?

Here at **phs**, and together with our partners, we're making it our mission to provide the perfect menstrual products for you, with no compromises! From standard non-applicator and applicator tampons, to standard and reusable pads and menstrual cups – we've got something to empower everyone.

Our eco-friendly products are made from 100% recycled polyester from plastic bottles making it easy to save the planet that little bit more.



“ We will continue to push the period equality agenda with the aim of ensuring free period products are available to everyone that needs them, when ever they need them. ”

# Male Incontinence matters



At **pHS**, we believe in equality and inclusion in the washroom. As the leading hygiene services provider in the UK, Ireland, and Spain, we have the responsibility to encourage lasting change.

Historically, male washrooms lack amenities, especially when it comes to the disposal of hygiene waste such as incontinence products. Tackling the taboo and protecting the environment, we know what men need when they visit the washroom, and we are driven to provide facilities that enable all men to dispose of their incontinence waste with dignity.

The waste collected from a male incontinence bin will be diverted away from landfill thanks to our **pHS** LifeCycle Strategy. The waste will be taken to a nearby energy recovery facility where it is turned into power for the local community.



Discreet and hygienic, the male incontinence bin from **pHS** offers users a discreet disposal method for incontinence waste.

By incorporating an incontinence bin into male washroom cubicles, businesses can ensure they are creating 'safe spaces' for men to allow them to dispose of their waste discreetly; meeting the hygiene needs of employees and visitors, while also helping to reduce the stigma around male incontinence. Show incontinence who's boss in the workplace.



**DID YOU KNOW?** One in three men over 65 are estimated to have an incontinence problem in the UK.\*

\* <https://pubmed.ncbi.nlm.nih.gov/20541241/>



# Creating the BOG STANDARD Washroom



### WHAT IS THE BOG STANDARD?

The **BOG STANDARD Charter** is an initiative designed to support men living with incontinence, including many who have had prostate cancer treatment.

Part of the 'Dispose with Dignity' campaign in partnership with Prostate Cancer UK, this standard aims to make washrooms a safe space where men can dispose of their incontinence products with dignity, thereby reducing feelings of embarrassment, shame, or anxiety.

### BOG STANDARD TIERS

**BOG STANDARD** has three tiers, each representing a different level of commitment from organisations:



#### Bronze Standard

**Requirements:** Installation of **phs** Male Incontinence Bins specifically designed for the disposal of incontinence products.

**Purpose:** Provides men with a basic but essential facility to dispose of their incontinence products discreetly and hygienically.



#### Silver Standard

**Requirements:** Installation of the bins and vending machines that provide incontinence products.

**Purpose:** Ensures men have access to necessary products when they are caught short, never leaving them without support.



#### Gold Standard

**Requirements:** All the above and active participation in awareness drives, supporting Prostate Cancer UK. To help aid this awareness, we have created a campaign toolkit, which includes downloadable assets, posters, stickers, social media posts and content.


**Purpose:** Demonstrates a comprehensive commitment to broader awareness and support initiatives, promoting a culture of understanding and action towards men's health issues.



Prostate cancer affects **1 in 8 men** in their lifetime.

There are **52,000** diagnoses every year.

**BOG STANDARD** ensures that these men can continue to live their lives confidently and comfortably.




### THE IMPORTANCE OF CREATING BOG STANDARD WASHROOMS

By adopting the **BOG STANDARD**, businesses are making a real difference in the lives of countless men, supporting their health and well-being while also contributing to environmental sustainability.

**Social Value:** Supporting the **BOG STANDARD** enhances social value by providing men with the dignity and facilities they need to manage their condition confidently.

**Environmental Value:** **phs** Group's commitment to environmental sustainability ensures that hygiene waste collected is diverted away from landfill through the **phs** LifeCycle Strategy, transforming it into energy.

**The Right Thing to Do:** Creating **BOG STANDARD** washrooms is a vital step in supporting men facing the challenges of incontinence and prostate cancer treatment, contributing to their overall well-being and promoting a culture of respect and dignity.



We are also encouraging football fans to support Prostate Cancer UK's Prostate United Challenge this October to help drive awareness and fundraising.



Join us in this important effort to create supportive, dignified spaces for all men.

Visit [www.phs.co.uk/BOGSTANDARD](http://www.phs.co.uk/BOGSTANDARD) for more on the **BOG STANDARD Charter** accreditation.





## MALE INCONTINENCE BIN

> Discreet. Dignified. Disposal.



The male incontinence bin from **phs** offers a discreet and hygienic disposal solution for incontinence waste.

This bin is suitable for the disposal of incontinence pads and shields, disposable pants and related incontinence products.

### Men of all ages experience incontinence

By incorporating an incontinence bin into male washroom cubicles, businesses can ensure they're meeting the hygiene needs of employees and visitors. While also helping to reduce the stigma around male incontinence.

### Fully-serviced

This bin is offered as part of a complete liner exchange service. **phs** will provide your business with an incontinence bin. Hygiene technicians will then return to empty and clean the bins at a frequency of your choosing.

### KEY FEATURES

- No-touch operation to prevent the spread of germs between users
- Cleaned with Bio Sanitiser to combat 99.99% of bacteria
- Service agreement ensures waste is being correctly sorted and disposed of
- Wider opening and chute for easier disposal



# Net Zero

## > We do the right thing by providing **sustainable solutions**

Our team of over 3,000 expert personnel provides washroom, floorcare, healthcare and a range of specialist services to over 120,000 customers ranging from large single sites, to multi-national restaurant chains, healthcare establishments and small owner occupied shops.

For the purposes of this document, the carbon emissions and targets of the companies listed below, which are under common ownership and management, have been consolidated and “**phs** Group” shall be construed accordingly:

- Personnel Hygiene Services Limited
- **phs** Compliance Limited
- Teacrate Rentals Limited
- Direct365online Limited

### Completed Carbon Reduction Initiatives

The following environmental management measures and projects have been completed or implemented since the 2019 baseline. The carbon emission reduction achieved by these schemes equate to 870 tCO<sub>2</sub>e by June 2021, a 2.7% reduction against the 2019 baseline. In some cases (marked “\*\*”) the roll-out of the measures continues and the ultimate tCO<sub>2</sub>e savings will be higher than those achieved to date.

**NET  
ZERO  
BY 2040**



#### \*\*Introduction of smaller, more fuel-efficient and environmentally cleaner washroom service vehicles.

By June 2021, we had replaced 21% of the fleet, achieving an annual saving of 330 tCO<sub>2</sub>e.

As the roll-out continues, we expect to have replaced half of the fleet (saving 770 tCO<sub>2</sub>e annually) by June 2022 and the full fleet (saving 1500 tCO<sub>2</sub>e annually) by June 2024. Also, by June 2022, all vehicles in our fleet will be Euro VI compliant.



#### \*\*Increased disposal of hygiene waste (sanitary, nappies and incontinence products) collected from our customers via energy recovery facilities as opposed to landfill.

In the year to June 2021, we directed over 46,000 tonnes of hygiene waste to energy recovery plants, resulting in a saving of over 20,000 tCO<sub>2</sub>e versus landfill.

In order to continue our progress to achieving Net Zero, we have adopted the following carbon reduction targets. We project that:

Carbon emissions will **decrease over the next five years**

to 18,400 tCO<sub>2</sub>e **by 2027**

A **reduction of 42%** versus the baseline

Note that the increase in overall tCO<sub>2</sub>e between 2019 and 2020 is due to an increase in customer waste disposal volumes, resulting in an increase in Scope 3 emissions.

However, we believe that we direct a higher proportion of our customers’ waste to energy recovery plants than our competitors, hence the overall environmental impact in 2020 is reduced versus 2019 when the waste was being managed elsewhere and a higher portion was being landfilled.

The introduction of electric vehicles to our fleet of ~2000 vehicles has the potential to dramatically reduce our scope 1 emissions, more than 75% of which relate to vehicle fuel. We launched our first electric vehicles in June 2022, and we look forward to introducing a growing number of electric vehicles to our commercial fleet over the coming years. We have installed several electrical charging points across our **phs** sites to encourage our employees to make the move to greener transportation.



#### Adoption of telematics systems across all commercial vehicles

encouraging safe and fuel-efficient driving, leading to a 3% reduction in fuel usage (saving 500 tCO<sub>2</sub>e).



#### Amendment to our delivery model for washroom services

meaning that drivers are required to visit the service depot less frequently, resulting in reduced mileage and a saving of 40 tCO<sub>2</sub>e annually.

## Turning the tide on **plastic pollution**

➤ It's never been more important for our planet's future that we collectively tackle plastic waste. And, whilst awareness has certainly grown in recent years about the importance of reducing the ecological risk posed by plastic, there's still a lot of work needed to encourage behavioural shifts from businesses as much as consumers.

Unlike other waste items, plastics are non-biodegradable. So, whilst larger items may break down over time into smaller microplastics over time, they will never decompose. Not only does this explain why our oceans are drowning in plastic, but items that aren't correctly treated or disposed of end up in landfills, which goes on to pollute our soil.

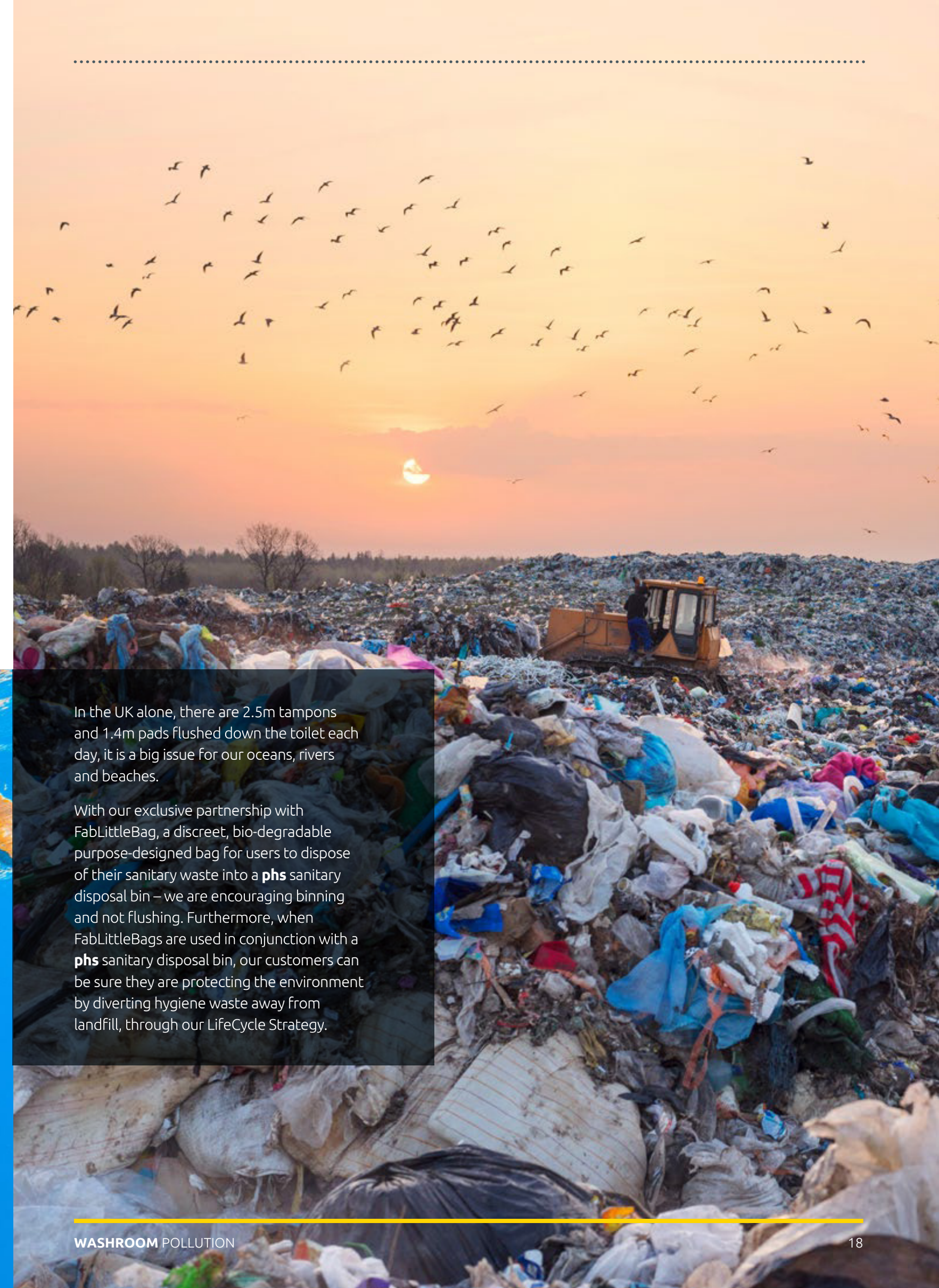
The focus of single-use plastic stories is often around objects such as straws or cotton buds.

Which means many people are still surprised to learn that items such as disposable nappies and menstrual products contain a high percentage of plastic. And there's even less awareness on how incorrect disposal contributes directly to plastic pollution.

At **phs**, we feel strongly that there's still enormous scope to help stop everyday sanitary items, from wet wipes to period products, passing directly into our waterways, harming wildlife and polluting our oceans.



**Ending pollution.  
PERIOD.**



In the UK alone, there are 2.5m tampons and 1.4m pads flushed down the toilet each day, it is a big issue for our oceans, rivers and beaches.

With our exclusive partnership with FabLittleBag, a discreet, bio-degradable purpose-designed bag for users to dispose of their sanitary waste into a **phs** sanitary disposal bin – we are encouraging binning and not flushing. Furthermore, when FabLittleBags are used in conjunction with a **phs** sanitary disposal bin, our customers can be sure they are protecting the environment by diverting hygiene waste away from landfill, through our LifeCycle Strategy.

# Washroom hygiene



- HAND CARE**
  - HAND DRYER
- DISPENSING**
  - SOAP DISPENSER
- AIR CARE**
  - AIR PURIFIER
  - ODOUR CONTROL
- SPECIALIST MAT**
  - HAND DRYER MAT

## HEALTHIER ENVIRONMENTS

Germ and viruses spread quickly through hands so providing good quality hand hygiene equipment in your washroom is vital.

We understand that no-one likes being faced with a washroom with no soap or inadequate hand drying facilities so we work with organisations to provide fully serviced washrooms that provide appropriate, well-maintained facilities for their visitors and staff.

From high speed, low cost dryers to discreet drying at a low volume, our new series of **AIRSTREAM** hand dryers show how we can apply our pioneering technology and innovation to meet the diverse needs of our customers.

We know that hand dryers are a typical area for collecting water. We can provide hand dryer mats to help avoid slips and trips in the washroom by soaking up the water that can lead to wet and slippery floors, so you can avoid unnecessary and potentially costly accidents.

**AIRSTREAM PURE**  
Hygienic

**AIRSTREAM WHISPER**  
Quiet

**AIRSTREAM VITESSE**  
Fast



### DID YOU KNOW?

The average office worker's hands come into contact with **10 million bacteria** a day.

### KEY FACT

Hand washing can reduce illness by **30-50%**

## A welcoming hygienic environment

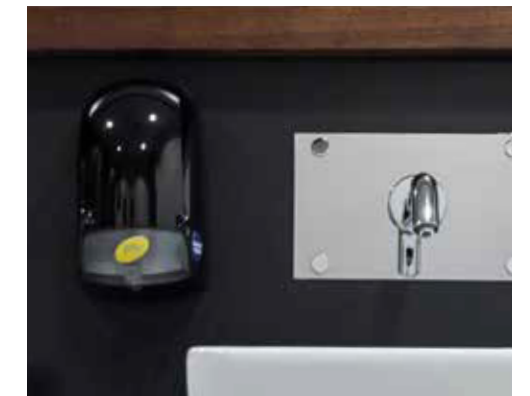
The very first thing visitors notice about a washroom is its smell. An unpleasant odour creates an instant bad impression and may put visitors off all together. Bad smells can also mean your washroom is harbouring dangerous germs.

We understand the importance of maintaining clean, fresh-smelling air that creates a welcoming, healthy environment. Our revolutionary air freshening technology systems ensure your washroom stays odour-free, whatever its size, by destroying bad smells, not just masking them.

Public and shares spaces, like open plan offices and shopping centres, are breeding grounds for bacteria, viruses, dust, allergens and harsh chemicals and odours. As a result, airborne viruses such as flu are easily passed, affecting between 15 and 20% of the population each year.

We can make your areas healthier and hygienic for both visitors and employees. Our innovative **AERAMAX Professional** is an air purifier with a HEPA filter that has been shown in an independent laboratory study to remove 99.9% of the airborne flu virus within 35 minutes of operation, filtering ambient air several times an hour.

Our energy-saving hand dryers cut energy use by **80%** compared to traditional dryers



### The placement of a **phs AIR FRESHENER and AIR PURIFIER**

within your waiting area provides a simple and hassle free solution and helps you to ensure your business adheres to relevant legislation surrounding air care.



# Washroom hygiene

## GOING GREEN

Having an energy efficient, environmentally friendly washroom can impress visitors and save you money.

There are a range of ways you can reduce costs in your washroom from water saving equipment to energy efficient dryers and auto-stop taps. We have applied our innovative technology to create a range of these solutions for our customers.

Our new mats are made with ECONYL® yarn. ECONYL® yarn is a 100% regenerated and regenerable Nylon 6, made from waste, such as fluff from carpets, textiles and recovered fishing nets disposed in the sea. So our mats are not only helping to keep your floors clean, they are helping to clean up the ocean.

From systems that reduce water consumption in toilets and urinals, to unique energy-saving hand dryers, we have solutions to suit all organisations whatever their environmental needs.



## DID YOU KNOW?

Our **FLOWSAVER®** urinal water management control system can save up to 80% (with an average of 70%) of water when compared to an uncontrolled cistern and up to 30% against an “unintelligent” system (dependent upon urinal usage).

Our innovative **phs** products are installed by our experts, so you can feel confident you receive a safe and professional service



“ Installing Flush-Wiser, Flow-Saver and Water Saving Taps in our schools’ washrooms has seen us dramatically reduce our environmental impact at the same time as saving us £3,500 with no loss of hygiene. ”

Bursar, Fairstead House School



## WATER AND ENERGY CONTROL



HAND DRYER



WATER MANAGEMENT SYSTEM



AUTO STOP TAP








FLUSH CONTROL



ECO MAT

# Floorcare hygiene

**41%** of workplace injuries are caused by...  
**SLIPS, TRIPS & FALLS\***  
\*International Workplace

ENTRANCE MATS	WORKPLACE MATS	
		
LOOSE LAY MAT	ANTI-FATIGUE MAT	VENDING MAT
		
FITTED MAT	WASHROOM MAT	HEALTH AND SAFETY WARNING MAT



## DID YOU KNOW?

On average an entrance mat absorbs so much material that it becomes ineffective after two weeks of use.

**70%** of the dirt entering your building is from **THE SOLES OF PEOPLE'S SHOES**

### WHY PHS FLOORCARE

Creating a **clean, safe and welcoming environment** isn't just about managing the specific waste associated with your business. It's also about managing the less obvious, day-to-day dirt that is part of being human. And in everyday life we regularly collect dirt on our shoes, taking it with us wherever we go.

Patients, visitors and employees walk along busy streets where there are pigeons, seagulls and dogs and will bring this dirt, as well as grease, soil, mud, soot, hair, glass and skin into your premises. All of this dirt can be captured by mats placed in the areas of highest footfall, helping to prevent it from spreading throughout the building.



By appointment to  
 Her Majesty Queen Elizabeth II  
 Suppliers of Mats and  
 Matting Services  
 phs Group, Caerphilly

Our mats also help to avoid slips and trips at work by soaking up water that can lead to wet and slippery floors, so you can avoid unnecessary and potentially costly accidents in the workplace – both in terms of money and lost hours.

Our unique mat products carry the Royal Warrant. As well as providing suitable mats for your business, we also launder them, making sure that they continue to function effectively, trapping dirt and retaining moisture.

Not only do our unique mat products carry the Royal Warrant, we also help protect the environment by providing mats made from Econyl - a recycled material using fishing nets and plastics disposed in the ocean.

As well as providing suitable mats for your business, we also launder them, making sure that they continue to function effectively, trapping dirt and retaining moisture.



		
LIFT & LAY SERVICE	ON-SITE SERVICE	ADVANCED LAUNDERING

# Healthcare hygiene

## WHY PHS HEALTHCARE

Running a successful healthcare business means demonstrating the highest standards of patient well-being and care and providing a professional and welcoming environment.

We understand the importance of meeting patients' needs and complying with current legislation. Whether you're a doctor, dentist, hospital, care home provider, tattooist or vet, we provide a range of services including safe and hygienic sharps and waste storage, collection and disposal solutions, as well as washroom hygiene and floorcare hygiene solutions.



We cater for all patient waste needs with a range of sanitary, incontinence and nappy disposal units and a unique collection and disposal service, which utilises our revolutionary LifeCycle plant - the only one of its kind that recycles hygiene waste, reducing the impact on landfill and creating energy.



## DID YOU KNOW?

**phs** Group are on hand to help you complete your pre-acceptance audit, a regulatory requirement imposed by the Environment Agency.



## CLINICAL WASTE



ECO LOC



TIGER BAG



EURO BIN

## DENTAL WASTE



TOOTH BOX



FIXER CONTAINER

## PHARMACEUTICAL WASTE



CONTROLLED DRUGS KIT

## SHARPS AND DRESSINGS DISPOSAL



SHARPS BIN



SWABS AND DRESSINGS DISPOSAL

## KITS AND CONSUMABLES



SPILLAGE KITS



HYGIENE ROLL



GLOVES

## Making a **difference**

- FabLittleBag is a discreet, bio-degradable, purpose-designed bag for users to dispose of their sanitary waste into a **phs** sanitary disposal bin - encouraging binning not flushing.

When FabLittleBags are used in conjunction with a **phs** sanitary disposal bin, our customers can be sure they are protecting the environment by diverting hygiene waste away from landfill, through our LifeCycle Strategy.



**PROTECTING  
THE ENVIRONMENT**

## **ECLIPSE™** DISCREET AUTO

- Advanced sanitary disposal technology. Helping our customers dispose of their sanitary waste discreetly and in an environmentally responsible way.



The **ECLIPSE** DISCREET AUTO offers customers a hygienic, modern and innovative way of disposing of hygiene waste. The no-touch operation minimises the risk of cross-contamination, as users simply wave their hand across the lid for it to open.

The smart design of the **ECLIPSE** DISCREET AUTO ensures that the sanitary bin is easily located either side of the WC, below seat level. The range is constructed from a highly durable ABS plastic which helps keep the units looking good no matter how often they're used.

### Product specification

Capacity	11.3 litres
Dimensions	44cm x 40cm x 14.8cm
Thickness	9mm
Construction	The base is made from Polypropylene; the lid is made from ABS Plastic making it tougher and scratch resistant
Lead time	7 to 10 working days

### Key features:

- NO-TOUCH automatic operation to open lid
- Improved cubicle experience with reliable, quiet operation
- Discreetly sized for storage on either side of the WC
- Privacy tray for easier posting of sanitary waste
- 2 premium colour options available to complement any washroom space: Nickel lid and black base/black lid and black base

# ECLIPSE™ DISCREET AUTO



## Operation instructions:

- 'NO-TOUCH' automatic operation to open lid
- PIR sensor detects the hand when held above the sensor
- Quiet open and close facility, battery powered console mechanically lifts lid
- Batteries exchanged as part of standard service

## Service:

- Replacement service so customer receives a clean sanitised bin at every service
- Serviced on a frequency to suit the customer footfall – 8, 12, 26, 52, 102pa
- Waste is diverted from landfill through our LifeCycle strategy



## Fully compliant

Fully licensed and compliant with all waste management regulations. A full auditable waste trail is provided.

### Product specification

Lead time 7 to 10 working days

## Also available – Sanitary bag dispenser

Hygienically transfer feminine hygiene products from the individual to the discreet sanitary disposal unit and prevent bodily fluids transferring on to the lid for the next user.

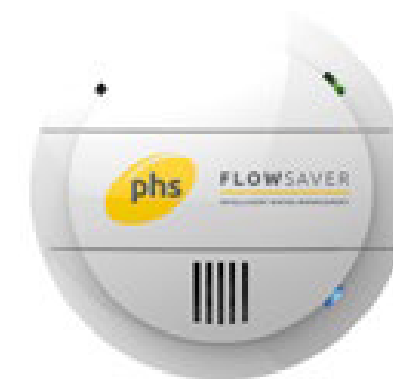
# Water management

➤ **Water saving:** tapping into innovation. Our range of revolutionary, patented, water-efficient products are helping organisations to save water and reduce bills.



“ We estimate that our washroom water products save our customers in excess of 2.6 million cubic metres of water each year. A single cubic metre equates to 1,000 litres! ”

### These products include:



Our award-winning **FLOW SAVER®** URINAL system is an intelligent flush-control system that prevents unnecessary flushing.



# ECOSHIELD 3 and FLOWSAVER URINAL

## Enhanced urinal servicing

Water is a precious resource, something we tend to forget in a country where there seems to be plenty of it. Using water more efficiently is a smart way to save energy and money, while also delivering on commitments to cut energy and resource wastage.



pphs leads the market in water management systems, urinal services and sanitising and cleaning products for the washroom. We've been developing innovative and patented water management products for decades. From flush and water management controls, urinal sleeves to cistern sanitisers, our products help prevent blockages, eliminate odour and reduce your running costs.

### The perfect partnership

For a water management system to work effectively, it requires two things: firstly, a device that regulates the flow of water through the urinal and secondly, a urinal sleeve that can eliminate urinal odours and blockages. And pphs can supply both.

ECOSHIELD 3 has been specifically formulated to work in conjunction with FLOWSAVER URINAL, a water management system that reduces water usage by up to 70% per cistern. The ECOSHIELD 3 helps prevent blockages, keeping urinal traps and pipework clear, whilst the FLOWSAVER URINAL prevents unnecessary urinal flushing, flushing exactly the right amount of water for your usage and location. Working together, they reduce washroom water usage, control odour, reduce future maintenance costs and eliminate the use of harmful cleaning products.

The common mistake with water management systems, is to implement one product without the other. When that happens, there can be a problem with odour. As the water only flows during peak times, urine and its associated deposits can be sat in the urinal and over time, can begin to block pipework. The natural reaction is to turn off the water management system, to increase the flow of water through the system, so no water savings are achieved.

Equally, introducing the urinal sleeve without the water management system means that too much water flows through the system, washing away the bio-block that is part of the product, so that it can no longer break down the uric salt and limescale. In both cases, the customer wrongly, but understandably, assumes that the products aren't working for them.

### Professionally installed

ECOSHIELD 3 is designed to be serviced eight times per year only, and is proposed only to be installed at a customer location with a FLOWSAVER URINAL fitted or similar approved WMS system.

To ensure maximum effectiveness, as part of the installation process, our technical installation team deep clean the pipe work from the urinal right back to the stack, removing limescale and uric salts that have built up over time. The ECOSHIELD 3 is installed into the urinal, the water flow will then be adjusted to ensure the right amount of Nurazyme™ bio-block is released to suit the footfall of the washroom and the flush pattern of the urinals.

### ECOSHIELD 3 key features:

- Reduces blockages and keeps urinal traps and pipe work clear
- Nurazyme™ bio-block breaks down the build-up of uric salt using natural enzymes and 'friendly' bacteria
- Fragrance mats available in 2 fragrances, citrus and aqua marine
- Connects to the urinal trap allowing it to be installed in all standard urinals and wall mounted troughs

## For best results

pphs recommends using the ECOSHIELD 3 and FLOWSAVER URINAL in conjunction with AUTOSAN for maximum hygiene results.



### AUTOSAN

Dispenses sanitiser directly into the cistern to help create a consistently hygienic wash through the urinal, helping to inhibit the build-up of bacteria in the trough.

### FLOWSAVER URINAL key features:

- Infra-red detection regulates flushing for maximum efficiency
- Hygiene flush every 12 hours, only flushing when the washrooms are in use
- Creates the optimum balance between hygiene and water costs

### Product specification

Lead time	7 to 10 working days
-----------	----------------------



## Air care

➤ Indoor air quality stands as a critical factor in shaping workplaces into safe, healthy, and hygienic spaces. It directly impacts employee health, productivity, and overall well-being.

Poor indoor air quality can lead to various health issues like allergies, respiratory problems, and fatigue, affecting employee performance and attendance. By prioritising good air quality through proper ventilation, air filtration, and regular maintenance, workplaces create an environment conducive to optimal health, reducing sick days and enhancing employee morale.

Clean air fosters a more comfortable and productive atmosphere, promoting a positive work environment that supports the well-being of everyone within it.



AIRSTREAM CLEAN



BIOZONE



“ pHs is committed to developing innovative products like our **AIRSTREAM CLEAN** and our **BIOZONE** air purifiers, which are both proven to reduce the spread of germs and allergens from the air. ”

\*To find out more visit;  
<https://www.phs.co.uk/our-services/washroom-hygiene/air-care-services/>

# AIRSTREAM CLEAN

Improves air quality by safely removing germs, allergens, and unwanted odours from interior air.

## A compact easy installation unit

The air-purifying unit is a solution that enhances the quality of your entire facility by filtering out airborne viruses, odours and removing harmful germs, allergens and other irritants from the air. It is an ideal air purifier for washrooms.

The carbon filter tackles washroom odours which then allows the air fragrancing to reach its max potential. The HEPA filtration helps to remove airborne virus particles not just COVID19.

### Key features:

- Highly effective hybrid (HEPA and carbon) filtration
- Unit is compact and wall-mounted to seamlessly integrate into any environment
- Easy installation and fully serviced
- Low power/low cost
- Movement detectors tailor to the air flow speed to suit room occupancy.



### Technical data

Effective Area	15 - 25 (m <sup>2</sup> )
Filter Volume	3500 cc
Power	45 W
Air Flow	3 fan speeds; 85, 130, 180 (m3/Hr)

### Product dimensions (HxWxD)

Unit	288 x 436 x 185 mm
Filter	350 x 200 x 50 mm
Installation	Wall Mounted

### The Benefits of Clean Interior Air

- Reduces absenteeism from allergies, asthmas, colds and flu.
- Creates a positive and health-focused environment for building users to enjoy.
- Improves productivity while improving perceptions of your premises.

### Movement detectors for efficient air cleaning

The **AIRSTREAM CLEAN** uses movement detectors to filter occupied rooms on maximum power (180 M3/Hr). If a room is unoccupied for 30 minutes, the air flow reduces to medium power (130 M3/Hr). If no movement detected is for 2 hours, the air flow reduces to minimum power (85 M3/Hr).

### Fully-Serviced

Expert pbs technicians will install your **AIRSTREAM CLEAN**. They will then undertake an ongoing 2 p.a service to replace the filter and ensure the device is working efficiently.

# BIOZONE

The advanced air purification system

**BIOZONE** helps to resolve permanent odour problems by destroying the bacteria that cause malodours both in the air and on surfaces. It also destroys viruses including flu, E.Coli, Salmonella and Streptococcus, and is highly effective in areas such as washrooms, doctor's waiting rooms, nursing homes and food preparation areas.



### Key features:

- Advanced technology uses 5 different techniques to destroy odour causing bacteria
- Tackles the cause of malodours rather than masking them
- Destroys 99.999% of bacteria in the air and viruses on surfaces
- Quiet operation
- Costs less to run than a low energy lightbulb

### Product specification

Dimensions	40.1cm x 13.1cm x 9.1cmz
Weight	0.96kg
Power Rating	16W 220-240V/110V
Installation	In a washroom, it should be located as close as possible and above the main odour sources i.e. urinals or toilet cubicles, and away from sources of air extraction.
Finishes:	Nickel silver
Lead time	10 days (as electrical survey maybe required)

# AIRSCENT BURST

## > Air fragrance: A fresh approach

Air fragrance manufacturers are seeing a shift in demand from large aerosol cans, along with an increase in 'passive systems' like candles and diffusers, and a reduced appetite for battery consumption.

Moreover, fragrance oil waste is both difficult and expensive to dispose of and transport. At **phs**, we have already placed great emphasis on producing ethical products.

Our new range of air freshener fragrances is suitable for locations with a vegan or vegetarian ethos; the manufacture and development of our fragrances does not involve the use of any animal product, by-product or derivative, and does not involve testing of any kind on animals.

We pride ourselves on listening to our customers, and we know that eco-friendly, sustainable options have become as important to them as they are to us. That is why now it is time for a new approach.

We plan to launch a 100% carbon neutral, recyclable product, **AIRSCENT ECO**, and refresh our product range with the aim of making it more sustainable, reducing waste and improving customer experience.

Product specification	
Lead time	7 to 10 working days



## > Improved sustainability with our AIRSCENT BURST

The cans for our new range of air freshener fragrances are smaller, which means we have been able to reduce Volatile organic compounds (VOCs) by over 60%; reduce our packaging and therefore reduce the number of containers needed to transport the goods. This has led to a significant reduction in transport emissions.

## > Our new range of air freshener scents includes:



# OXY-Supreme

## > Oxygenate your senses with our supreme new offering.

**phs OXY-Supreme** uses technology that guarantees continuous and consistent levels of fragrance throughout the cartridge scent life.

Consistent. Constant. Reliable. **Supreme** Scent.



### Key features:

- Eliminates malodors instead of masking them.
- Non-aerosol - cartridges are not pressurised, therefore easy and safe to store or transport
- LED light indicators provide cartridge and battery replacement reminders.
- 60-day fragrance (6pa service).
- All six scent cartridge options are IFRA, and REACH (Europe and UK) compliant, as well as being 100% recyclable.
- No added VOCs, Solvents, alcohols or propellants.

### Dimensions

H 60mm W 50mm D 40mm

## A supremely intelligent system

**phs OXY-Supreme** is an intelligent air freshener using oxygenated fuel cell technology.



The oxygen generator releases a precise dose of oxygen non-stop, which squeezes the bladder displacing the fragrance. A continuous measured dose is delivered onto a cellulose pad allowing the fragrance to be dispersed into the environment.

## > Choose your scent

					
<b>NEUTRALOX SUPER</b>	<b>CHARM</b>	<b>TANG</b>	<b>SPA</b>	<b>GLOW</b>	<b>ELATE</b>
An extremely high concentrate of neutra-lox malodour eliminator with just a hint of lemongrass fragrance. This is the ideal choice for areas where fragrance is not desired.	A Fantasy melon fragrance modified with cool green notes, a hint of citrus and a slightly floral background.	An intensely fruity perfume with hints of orange supported by warm spices.	A fresh, invigorating scent with fragrant lavender and spicy herbs	Juicy black cherries, with a hint of almond, plum, vanilla and cinnamon spice	A designer fragrance that seamlessly weaves sweetness of ripe fruits with the delicate beauty of blooming florals, enveloped with Musk notes.

# Energy efficient hand drying

## AIRSTREAM VITESSE®

➤ High speed, low energy



### Unique Connect Technology

**phs connect** is an innovative feature which allows the back plate and electrical connection to be installed separately to the main dryer unit. Once installed the dryer is easily, quickly and securely locked onto the back plate.

For refurbishments or new build sites, this allows the back plate and electrical connection to be installed at first fix, and the actual dryer unit to be installed later. It also allows any non-electrically qualified person to exchange in the unlikely event of a failure.

The **AIRSTREAM VITESSE®** offers a fast dry time of 11.2 seconds. This high speed, low energy hand dryer is slim, compact and modern, with class leading design, performance and efficiency. Its secure, click-on design ensures easy install and maintenance, allowing the dryer body to be exchanged by a non-electrically qualified person.

### Hygienically Clean

The outer casing and touchable parts feature antimicrobial protection technology, an additive that prevents the spread of pathogenic germs such as MRSA, E.coli and salmonella. All these factors combine to provide an ultra-hygienic level of hand drying, making it ideal for hygiene conscious environments.

#### Key Features:

- High speed dry time of 11.2 seconds
- Curtain of air scrapes water from your hands
- Secure click-on design for easy install and maintenances
- **phs connect** and back plate can be fitted at first fix, allowing dryer body to be fitted by a non-electrically qualified person at a later date
- Hygienic, as touchable parts contain an antimicrobial additive to reduce build-up of bacteria, germs and viruses
- Slim, compact and modern design makes it ideal for restricted space areas
- Automatic operation, infrared eye looking for movement within 18cm from the base of the dryer
- Strong and durable ABS plastic cover with single LED to communicate the dryer is connected to the power supply.

#### Product specification

Lead time	10 days (as electrical survey maybe required)
-----------	---

## AIRSTREAM PURE®

➤ Pure filtered air, hygienically dry hands



#### Key Features :

Fast dry time of less than 11.4 seconds<sup>1</sup>

HEPA filters remove 99.9% of bacteria and viruses

1100w energy efficient motor

Full width air slot for fast and effective drying action

Slim, compact and modern design makes it ideal for restricted space areas

Secure click-on design for easy install and maintenance

Strong and durable PC ABS plastic cover

Exclusive to **phs**, the **AIRSTREAM PURE®** offers a fast dry time of less than 11.4 seconds<sup>1</sup>, and with integral HEPA filters removing 99.9% of bacteria and viruses from the drying air<sup>2</sup>, it provides the ultimate hygienic hand drying facility, ideal for any washroom.

### Fast Drying

With a fast dry time of less than 11.4 seconds<sup>1</sup> the **AIRSTREAM PURE®** is ideal for busy washrooms ensuring users hands are dried thoroughly and quickly helping to reduce washroom congestion. The dryer features a full width air slot, delivering 48L of air per second, with a directional LED light source that helps to ensure users hands are optimally positioned for fast and effective drying.

The filtered ambient air has a comfortable warmed feeling due to the motor providing a warming effect, raising the expelled air temperature by approximately 17°C during operation.

### Hygienically Clean, Filtered Air

The **AIRSTREAM PURE®** contains two High Efficiency Particulate Air (HEPA) filters which remove 99.9% of airborne particulates as small as 0.3 microns from the air that enters the dryer, including viruses, bacteria, mould, pollen, and other allergens. The filters incorporate an antibacterial coating which helps eradicate micro-organisms, ensuring that only hygienically clean air is blown onto users hands.

The outer casing and touchable parts feature an antibacterial additive that prevents the spread of pathogenic germs such as MRSA, E.coli and salmonella. All these factors combine to provide an ultra hygienic level of hand drying, making it ideal for hygiene conscious environments.

